

School Performance Report 2018

Westall Secondary College

September 2018



Brought to you by Performance and Evaluation Division | **Strategy and Performance Group**

measuring what
matters



WESTALL SECONDARY COLLEGE (8470)

Domains: 7 out of 7
Measures: 17 out of 17

Overall Performance Group



Current Level: High

Change Level: Increased

Performance is high or very high. This level of performance is maintained consistently over three years or is on a positive improvement trajectory with the school acting as an influencer and system leader.

As an overall performance group, this indicates that the majority of domains and

A school's overall performance group represents its combined performance on the Achievement, School Climate, Student Attitudes, Engagement, Participation and Senior Secondary (for secondary, Pri/Sec schools only) domains.

Domain Performance Group

Achievement (Reading)

INFLUENCE

The Achievement (Reading) domain measures performance on NAPLAN assessments in Reading; which includes achievement in top two bands, lifting low performers and positive change in learning gain.

Achievement (Numeracy)

INFLUENCE

The Achievement (Numeracy) domain measures performance on NAPLAN assessments in Numeracy; which includes achievement in top two bands, lifting low performers and positive change in learning gain.

School Climate

INFLUENCE

The School Climate domain measures staff endorsements of Collective Efficacy and Academic Emphasis from the School Staff Survey.

Student Attitude

RENEW

The Attitudes to School domain measures students engagements in Stimulating Learning, Learning Confidence and Student Safety from the Attitudes to School Survey.

Engagement

RENEW

The Engagement domain focuses on students attendance.

Participation

RENEW

The Participation domain measures students participation in NAPLAN assessments, responses to School Staff Survey and responses to Attitudes to School Survey.

Senior Secondary

STRETCH

The Senior Secondary domain measures students achievement in VCE English subject and VCE/VCAL completion rates.

School Performance Report - 2018 - Detail

WESTALL SECONDARY COLLEGE (8470)



| Domain | Domain Performance Group | Measure | Measure Performance Group | Current Result (Year) | Current Result (Latest year) | Current Level | Change result^ (Last 3 years) | Change Level |
|------------------------|-----------------------------|---|---------------------------|-----------------------|------------------------------|---------------|-------------------------------|-------------------------|
| Achievement (Reading) | Influence (High, Increased) | % of students in Top two bands (Year 9) | Stretch | 2018 | 16.1% | Medium | 8.1% | Increased Significantly |
| | | % of students in Bottom two bands (Year 9)* | Stretch | 2018 | 24.7% | Medium | -14.4% | Decreased Significantly |
| | | % of students with high or medium relative learning gain (Years 7 to 9) | Influence | 2018 | 79.7% | High | 2.7% | Increased |
| Achievement (Numeracy) | Influence (High, Increased) | % of students in Top two bands (Year 9) | Stretch | 2018 | 21.1% | Medium | 3.7% | Increased Significantly |
| | | % of students in Bottom two bands (Year 9)* | Influence | 2018 | 7.8% | Low | -11.6% | Decreased Significantly |
| | | % of students with high or medium relative learning gain (Years 7 to 9) | Influence | 2018 | 87.1% | Very High | 3.2% | Increased |
| School Climate | Influence (High, Increased) | % of positive endorsement in Collective Efficacy | Stretch | 2017 | 54.8% | Medium | 2.4% | Increased |
| | | % of positive endorsement in Academic Emphasis | Influence | 2017 | 59.4% | High | 1.7% | Increased |
| Student Attitude | Renew (High, Maintained) | % of positive endorsement in Stimulated Learning (Years 7-12) | Renew | 2018 | 63.9% | High | -0.3% | Maintained |
| | | % of positive endorsement in Sense of Confidence (Years 7-12) | Influence | 2018 | 72.1% | Very High | 0.1% | Maintained |
| | | % of positive endorsement in Managing Bullying (Years 7-12) | Influence | 2018 | 68.4% | High | 2.5% | Increased |
| Engagement | Renew (Medium, Maintained) | Attendance Rate | Renew | 2017 | 90.4% | Medium | 0.0% | Maintained |

WESTALL SECONDARY COLLEGE (8470)



| Domain | Domain Performance Group | Measure | Measure Performance Group | Current Result (Year) | Current Result (Latest year) | Current Level | Change result^ (Last 3 years) | Change Level |
|------------------|--------------------------------|---|---------------------------|-----------------------|------------------------------|---------------|-------------------------------|-------------------------|
| Participation | Renew (Medium, Maintained) | % of students participating in NAPLAN (Year 9, Reading) | Influence | 2018 | 98.9% | Very High | 3.6% | Increased |
| | | % of students participating in ATOS (Years 7-12) | Transform | 2018 | 78.3% | Low | -1.2% | Decreased |
| | | % of staff participating in Staff survey | Renew | 2017 | 74.0% | Medium | -1.1% | Maintained |
| Senior Secondary | Stretch (Medium, Increased) | Mean VCE English score (study group) | Renew | 2017 | 27.5 | Medium | 0.1% | Maintained |
| | | % of VCE and VCAL certificate completions | Stretch | 2017 | 91.7% | Low | 6.9% | Increased Significantly |

* a low Current Result and a decrease in Change Result is desirable for this measure

^ two years of data is used to measure changes relating to the Attitude to School survey





How do you read your School Performance Report

Differentiated School Performance Groups



The Differentiated School Performance Groups (Figure 1) complement the revised approach to school review and differentiated approach to school improvement.

Five performance groups are identified.

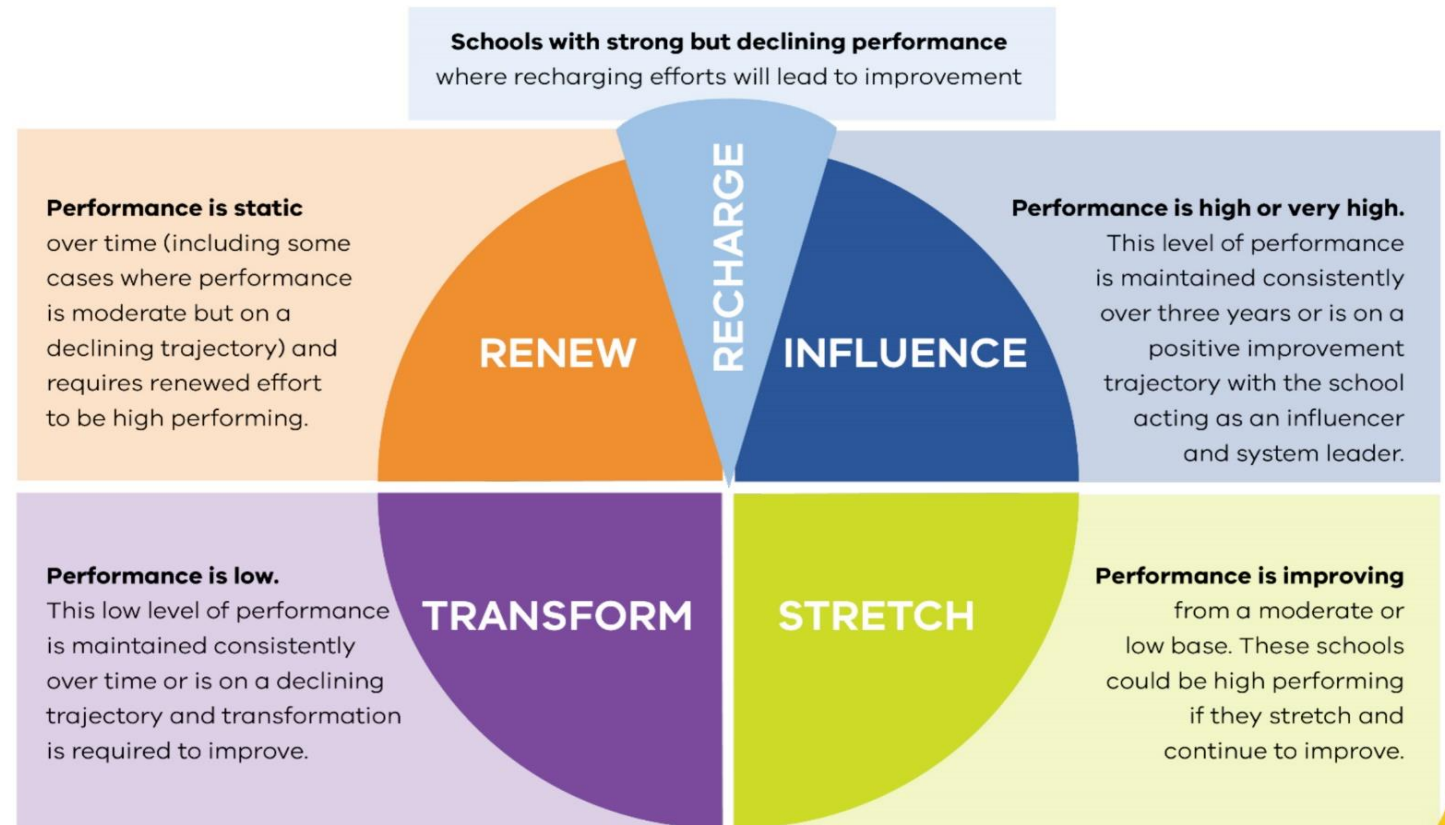


FIGURE 1: THE FIVE SCHOOL PERFORMANCE GROUPS

Determining Your School's Performance Group



| Current Level | Change Level | | | | |
|---------------|-----------------------------|---------------|----------------|---------------|-----------------------------|
| | 1 (Decreased Significantly) | 2 (Decreased) | 3 (Maintained) | 4 (Increased) | 5 (Increased Significantly) |
| | 5 (Very High) | | | | |
| | 4 (High) | | | | |
| | 3 (Medium) | | | | |
| | 2 (Low) | | | | |
| | 1 (Very Low) | | | | |

FIGURE 2: SCHOOL PERFORMANCE TABLE

- To determine your school's performance group, the 'current level' and 'change level' of all schools in the state are segmented into five performance levels to create a five-by-five table (25 segments) for each measure
- Your school's placement within this table, based on your school's 'current level' and 'change level' for each applicable measure, determines the performance group to which your school belongs
- Measures are aggregated to the domain level and an overall performance group level to provide an overall summary of your school's performance

| MEASURES | | | | | DOMAIN |
|--|---|---|---|---|-----------------------------------|
| Top two bands of NAPLAN | + | Bottom two bands of NAPLAN | + | NAPLAN Relative Learning Gain | ACHIEVEMENT (Reading/Numeracy) |
| Collective efficacy (% of positive survey responses) | + | Academic emphasis (% of positive survey responses) | + | Instructional leadership ¹ (% of positive survey responses) | SCHOOL CLIMATE |
| Stimulated learning (% of positive survey responses) | + | Sense of confidence (% of positive survey responses) | + | Managing Bullying (% of positive survey responses) | STUDENT ATTITUDE |
| Primary to Secondary ² (% of positive transitions) | + | Attendance Rate | | | ENGAGEMENT |
| Mean VCE English score ³ (study group) | + | Senior Secondary completions ³ | | | SENIOR SECONDARY |
| NAPLAN participation | + | Attitudes to School (survey participation rate) | + | School Staff Survey (survey participation rate) | PARTICIPATION |

¹The Instructional Leadership Measure in the School Climate Domain will be introduced in 2020.
²The Primary to Secondary Measure in the Engagement Domain will be introduced in the future.
³Only applicable to schools that offer senior secondary programs.

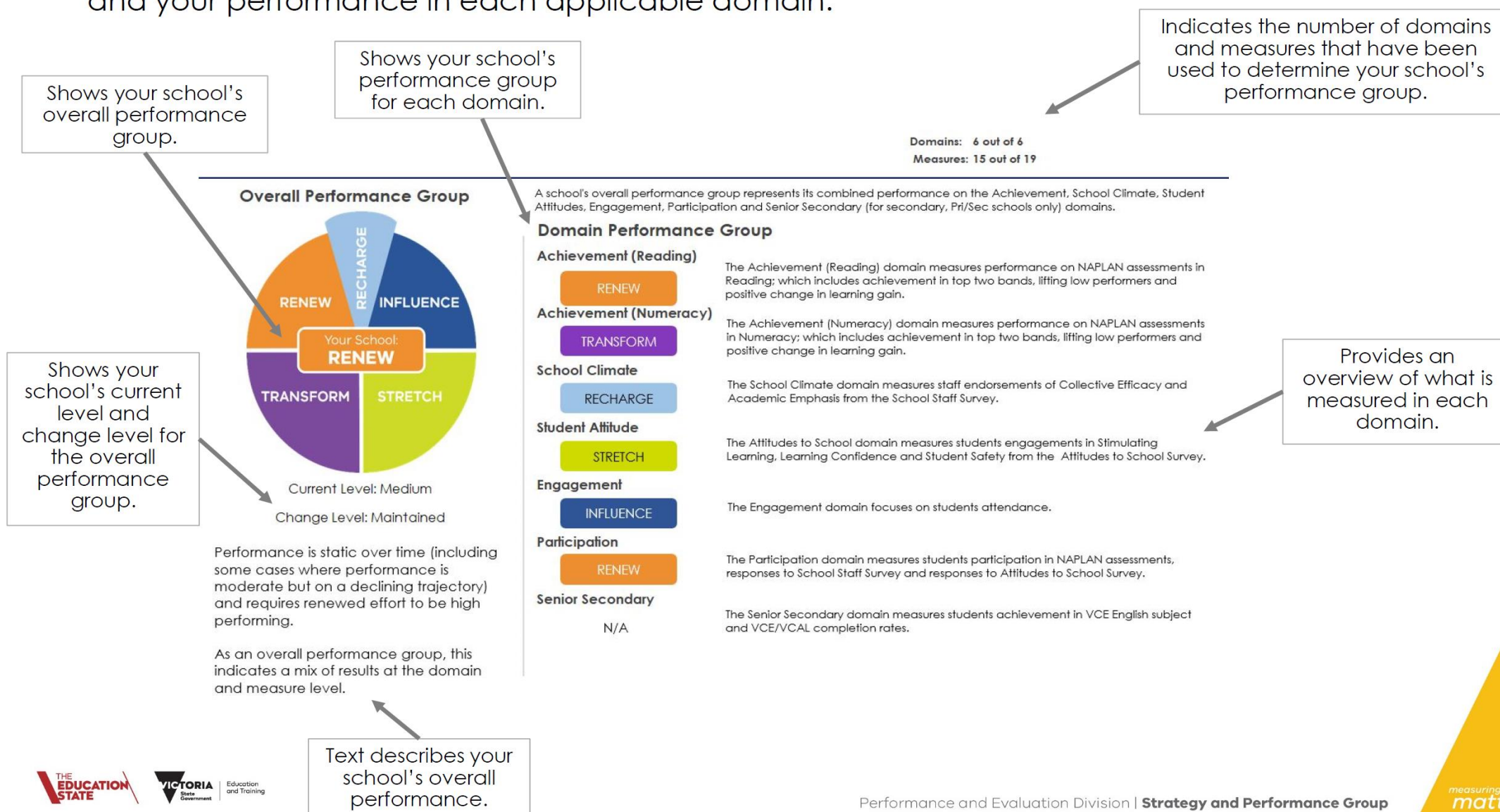
- The **six domains** and associated **measures** shown at left form the basis of the differentiation method.
- These have been selected based on their alignment to FISO school improvement objectives and Education State targets.

FIGURE 3: MEASURES AND DOMAINS

Reading your school performance report: Summary page



The summary page provides a graphical summary of your school's overall performance group and your performance in each applicable domain.



How to read your school performance report: Detail pages



Shows the domain.

Your school's domain performance group, current level and change level for each domain.

The measures that are used to determine your school's performance in each domain.

Your school's performance group for each measure.

Your school's most recent performance result for each measure.

The change in your school's performance over the last 3 years[^] for each measure.

Shows your school's change level for each measure.

Shows your school's current level for each measure.

| Domain | Domain Performance Group | Measure | Measure Performance Group | Current Result (Year) | Current Result (Latest year) | Current Level | Change result [^] (Last 3 years) | Change Level |
|------------------------|-----------------------------|---|---------------------------|-----------------------|------------------------------|---------------|---|-------------------------|
| Achievement (Reading) | Influence (High, Increased) | % of students in Top two bands (Year 9) | Influence | 2018 | 24% | High | 1% | Increased |
| | | % of students in Bottom two bands (Year 9)* | Stretch | 2018 | 23% | Medium | -2% | Decreased |
| | | % of students with high or medium relative learning gain (Years 7 to 9) | Influence | 2018 | 76% | High | 4% | Increased |
| Achievement (Numeracy) | Renew (Medium, Maintained) | % of students in Top two bands (Year 9) | Transform | 2018 | 13% | Low | -2% | Decreased |
| | | % of students in Bottom two bands (Year 9)* | Stretch | 2018 | 15% | Medium | -4% | Decreased |
| | | % of students with high or medium relative learning gain (Years 7 to 9) | Renew | 2018 | 71% | Medium | 2% | Maintained |
| School Climate | Renew (Medium, Decreased) | % of positive endorsement in Collective Efficacy | Renew | 2017 | 48% | Medium | -7% | Decreased Significantly |
| | | % of positive endorsement in Academic Emphasis | Renew | 2017 | 50% | Medium | -3% | Decreased |
| Student Attitude | Influence (High, Increased) | % of positive endorsement in Stimulated Learning (Years 7-12) | Stretch | 2018 | 54% | Low | 3% | Increased |
| | | % of positive endorsement in Sense of Confidence (Years 7-12) | Renew | 2018 | 69% | High | 1% | Maintained |
| | | % of positive endorsement in Managing Bullying (Years 7-12) | Influence | 2018 | 71% | Very High | 2% | Increased |
| Engagement | Transform (Low, Decreased) | Attendance Rate | Transform | 2017 | 90% | Low | -1% | Decreased |

[^]Two years of data is used to measure change in performance in the Student Attitude Domain.