

PARKING GUIDE

John XXIII College



JOHN XXIII
COLLEGE
SEEK JUSTICE

KEEP STUDENTS SAFE

The beginning and end of the school day are busy times for pedestrians and drivers outside our school campus. You can help keep students safe by remembering the following:

- Slow down around the College and drive safely.
- Be aware, be courteous and be responsible.
- Drop your child off and pick them up in designated pick-up areas
- Always take extra care in 40km school zones.
- Observe and adhere to all regulatory signage and follow all parking signs - these help keep your child as safe as possible.
- Never double park - it is illegal and puts children at risk.
- Model safe and considerate pedestrian and driver behaviours.
- Always give way to pedestrians particularly when entering and leaving driveways.
- Please make sure you carefully read the parking signs before you park your vehicle.
- Vehicles on the College campus must be parked within marked bays at all times.
- Vehicles may not park in no parking areas, no stopping areas, access ways or any area not officially set aside for parking, including verges, gardens and pathways.
- Please use the John XXIII College carparks only. We need to respect our neighbours, as parking, even if for five minutes during morning or afternoon pick-up is causing inconvenience.



JOHN XXIII
COLLEGE
SEEK JUSTICE

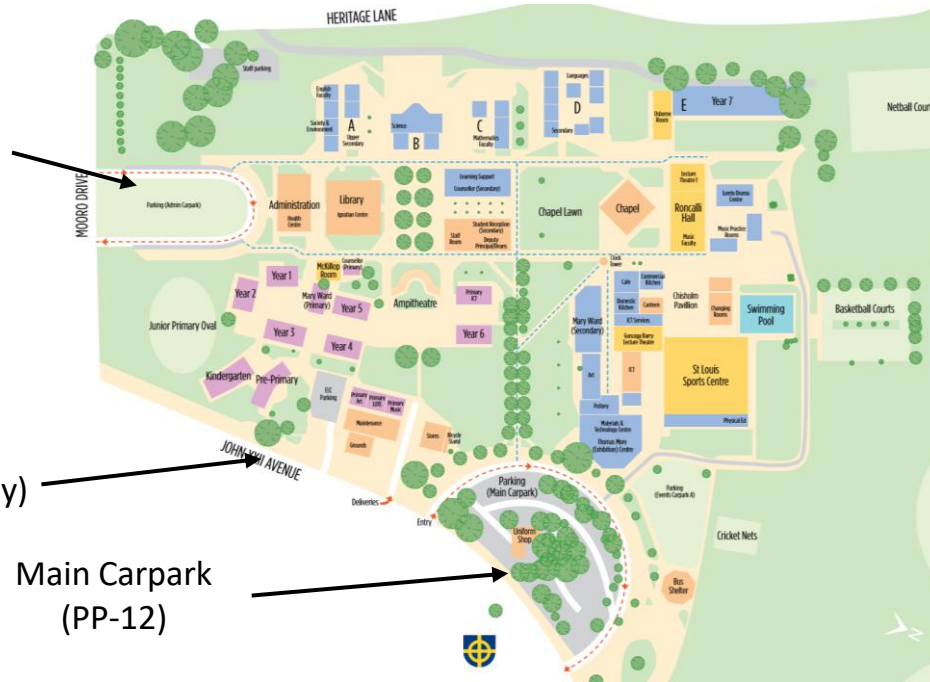
PRIMARY PARKING AND PICK UP AREAS

The College has three parking areas available for parents to drop off and collect children.

The Loop
(Years 1-3)
and their older
siblings

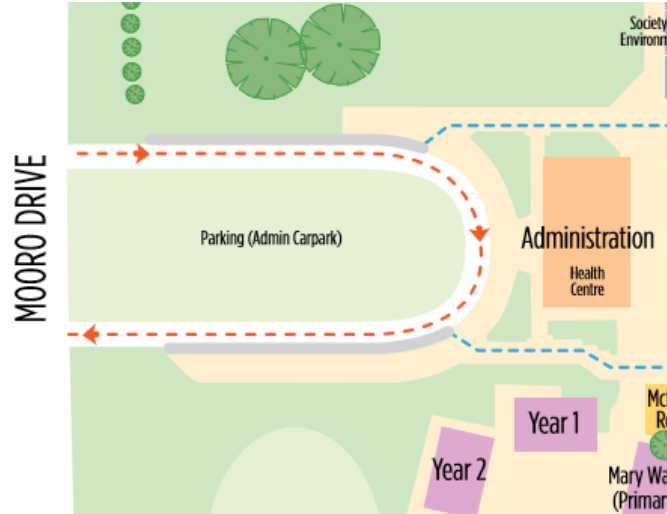
Early Years Carpark
(for PK & KG families only)

Main Carpark
(PP-12)



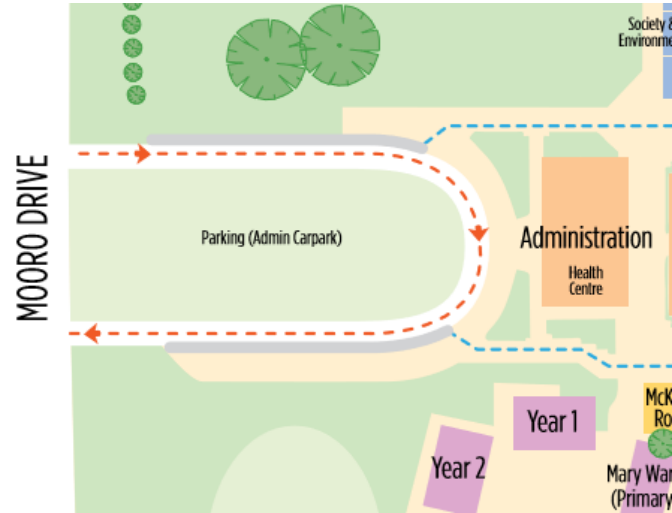
THE LOOP

- Available for morning drop off for Y1-Y12 students.
- Available for pick up for parents with a child in Y1-Y3 (and their older siblings).
- Teaching staff operate the loop for the afternoon pickup between 3:15pm and 3:30pm.
- Please ask your child to wait in front of the Administration building. There are bollards for them to sit behind.
- Should any children remain at 3:30pm, the staff will take them inside the Administration building and contact parents.



THE LOOP'S GOLDEN RULES (MORNING)

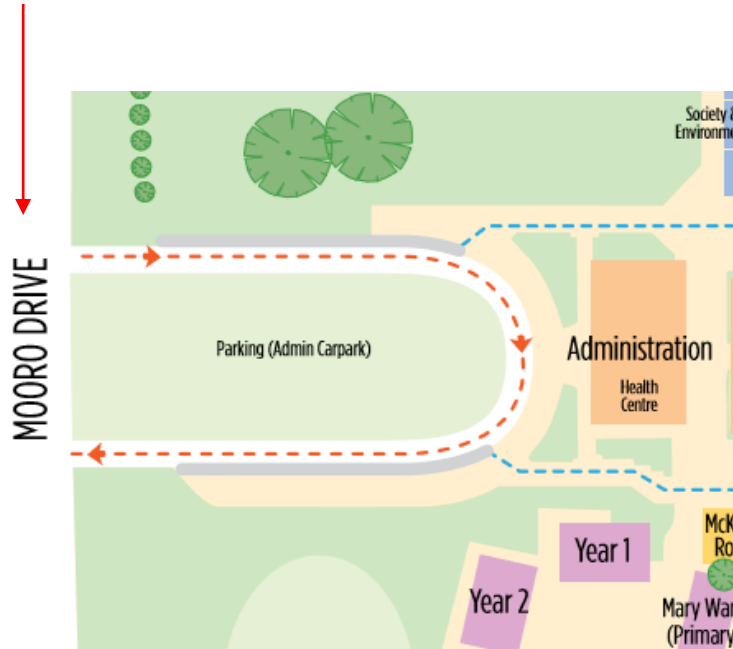
- 1) Please drive all the way to the bottom of the loop (in front of the Administration building).
- 2) For safety, have your child exit from the non-driver (left) side of the vehicle.



JOHN XXIII
COLLEGE
SEEK JUSTICE

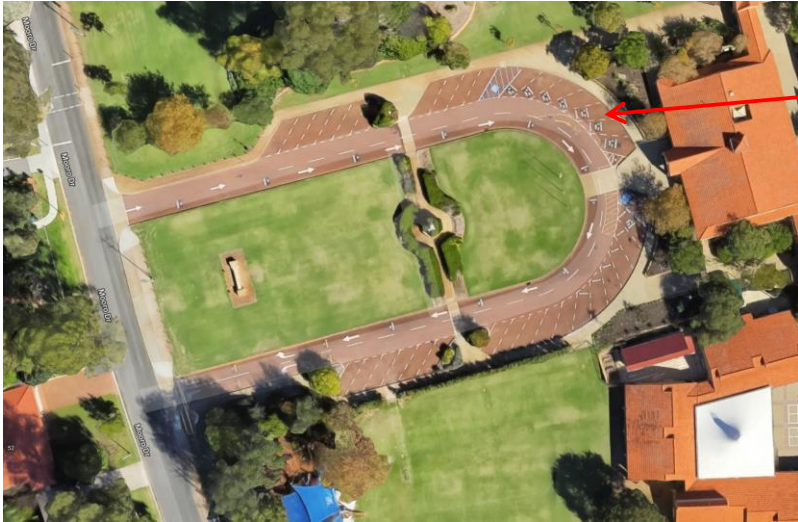
THE LOOP'S GOLDEN RULES (AFTERNOON)

1. Try to keep Mooro Drive flowing:



Ideally, approach the loop from the west end of Mooro Drive. This allows an easy left hand turn into the loop.

THE LOOP'S GOLDEN RULES (AFTERNOON)



2) Smart queuing:
When waiting for your child in the afternoon please drive all the way to the Administration building to queue (this allows more vehicles to queue off Mooro Drive).

THE LOOP'S GOLDEN RULES (AFTERNOON)

3) Be easy to spot:

Have your surname sign displayed on your dash board. The teachers will then call your child/children, ready for your approach.

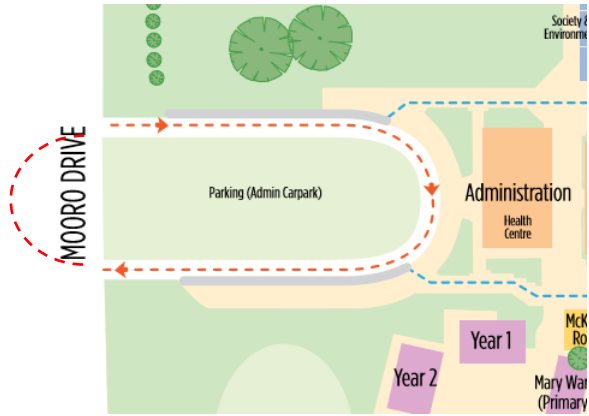
SMITH

John



JOHN XXIII
COLLEGE
SEEK JUSTICE

THE LOOP'S GOLDEN RULES (AFTERNOON)



4) Keep it moving:

If your child isn't yet at the loop, then please 'keep looping'. This allows other parents (with children who are ready) to start pick up.

Handy tip: If your child takes a little while to walk to the loop, then perhaps arrive a bit later. A teacher is on duty until 3:30pm.



JOHN XXIII
COLLEGE
SEEK JUSTICE

THE LOOP'S GOLDEN RULES (AFTERNOON)

5) Keep it safe:

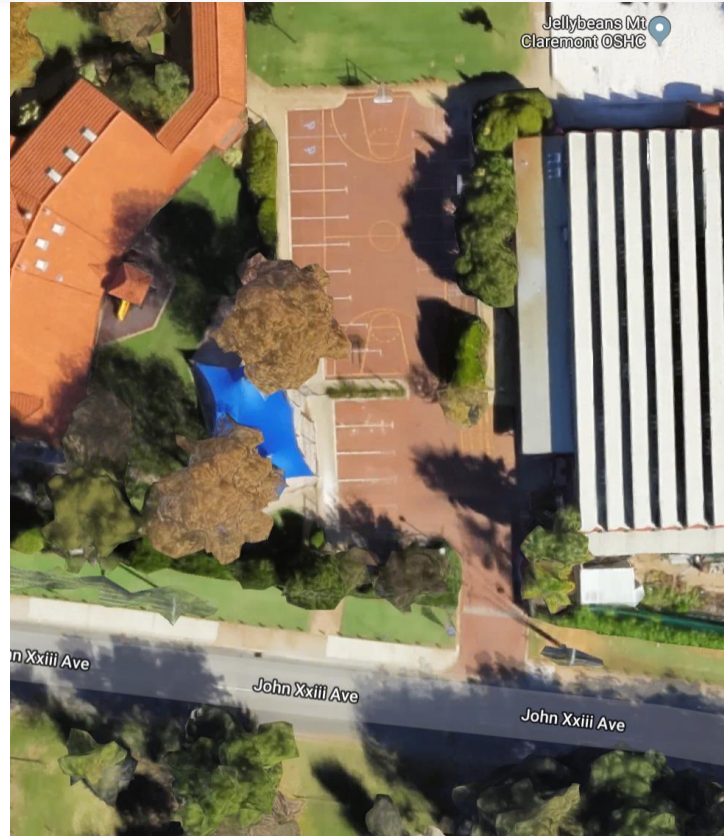
Once you have stopped in front of the Administration building, please stay in your vehicle. Staff will help your child get into your car safely, from the non-driver side.



JOHN XXIII
COLLEGE
SEEK JUSTICE

EARLY YEARS CARPARK

- Available for parents with a child in Pre-Kindy and Kindy. Access is via John XXIII Avenue (south of the main carpark).
- This carpark will be locked from 9.15am until 2.45pm each day.
- Please do not park in this area if you are on parent roster.
- During school hours this area is gated to provide students with a secure play area on the court.



EARLY YEARS CARPARK GOLDEN RULES

1) Reverse Parking:

Reverse parking helps keep our children safe as we have better visibility when we are exiting the carpark.



JOHN XXIII
COLLEGE
SEEK JUSTICE

EARLY YEARS CARPARK GOLDEN RULES

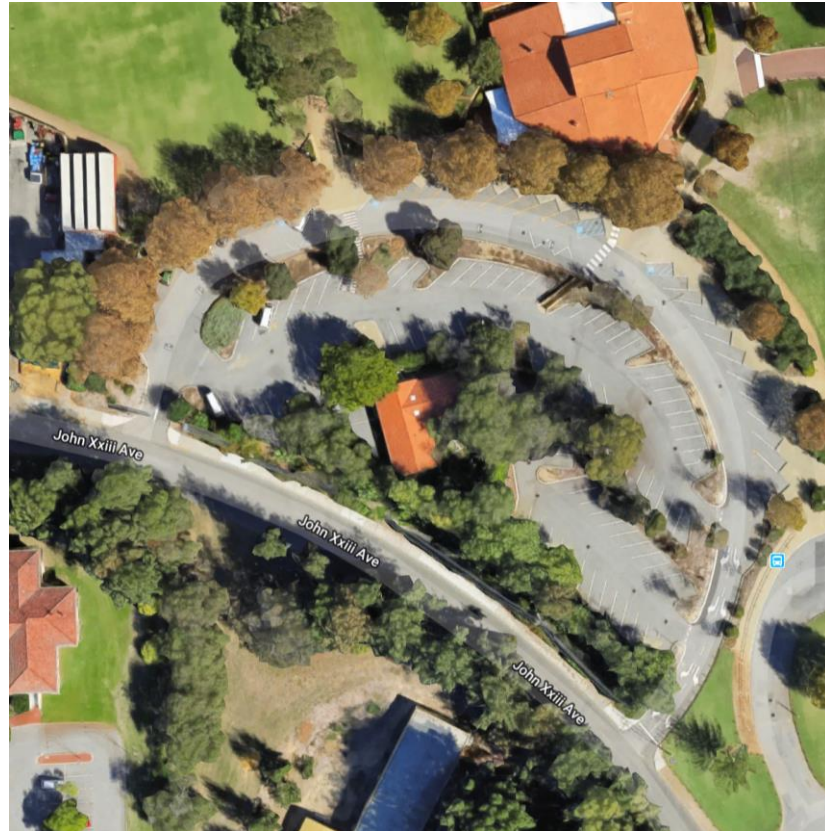
2) Please stick to the paths:
There are paths around the perimeter for parents and children to use.



JOHN XXIII
COLLEGE
SEEK JUSTICE

MAIN CARPARK

- Available for all families in Primary and Senior school.
- Please respect signs regarding Event and Exam parking.



WEBSITE SUMMARY

<http://www.johnxxiii.edu.au/view/for-parents/parking-and-college-pick-up-and-drop-off-guide>



JOHN XXIII
COLLEGE
SEEK JUSTICE