



**Bianca Petsos, Year 12**  
***404: Authenticity Not Found***  
Oil on board

**“15 years ago, the internet was an escape from the real world. Now the real world is an escape from the internet” – Noah Smith**

Throughout my childhood, the internet was only accessible in one corner of my house, where a glowing computer screen felt like a gateway to untapped knowledge, creativity, and connection. But now, it's everywhere; in our hands, pockets, accessible at all times and in all places. And with this expansion comes saturation – particularly with A.I. programs, which increasingly drain the creativity from everyday tasks.

Enveloped by the fluorescent glow of our phone screens, we chase the promise they once held. But A.I. doesn't reflect reality – It abstracts it. Built on data and probabilities, it struggles to create with true authenticity. Still, we rely on it, turning a blind eye to its insistence on producing an image of distorted hand with six fingers, featuring repetitions in light and colour that defy the beautiful, disorderly chaos of the world.

My use of A.I. in the creation of this painting aims not only to show its limitations, but its potential. True expression begins with the raw, unfiltered spark of human imagination. Only then can technology be used to support our creativity, without consuming it entirely.



**Madison Allen, Year 12**

***The Exchange***

Oil on board

In a world where animals are stripped of their wildness and turned into materials—fur, leather, wool, feather, —comfort is often built on quiet violence. This work plays with shifting perspectives, revealing how easily something living becomes something used.

The images are unstable, caught between two realities. A bedroom—normally a place of rest—becomes a site of subtle transformation, where softness once had skin, and warmth once breathed. Familiar objects begin to carry unfamiliar weight.

I'm interested in that line between natural and artificial, and how often it blurs when convenience dulls our sense of consequence.





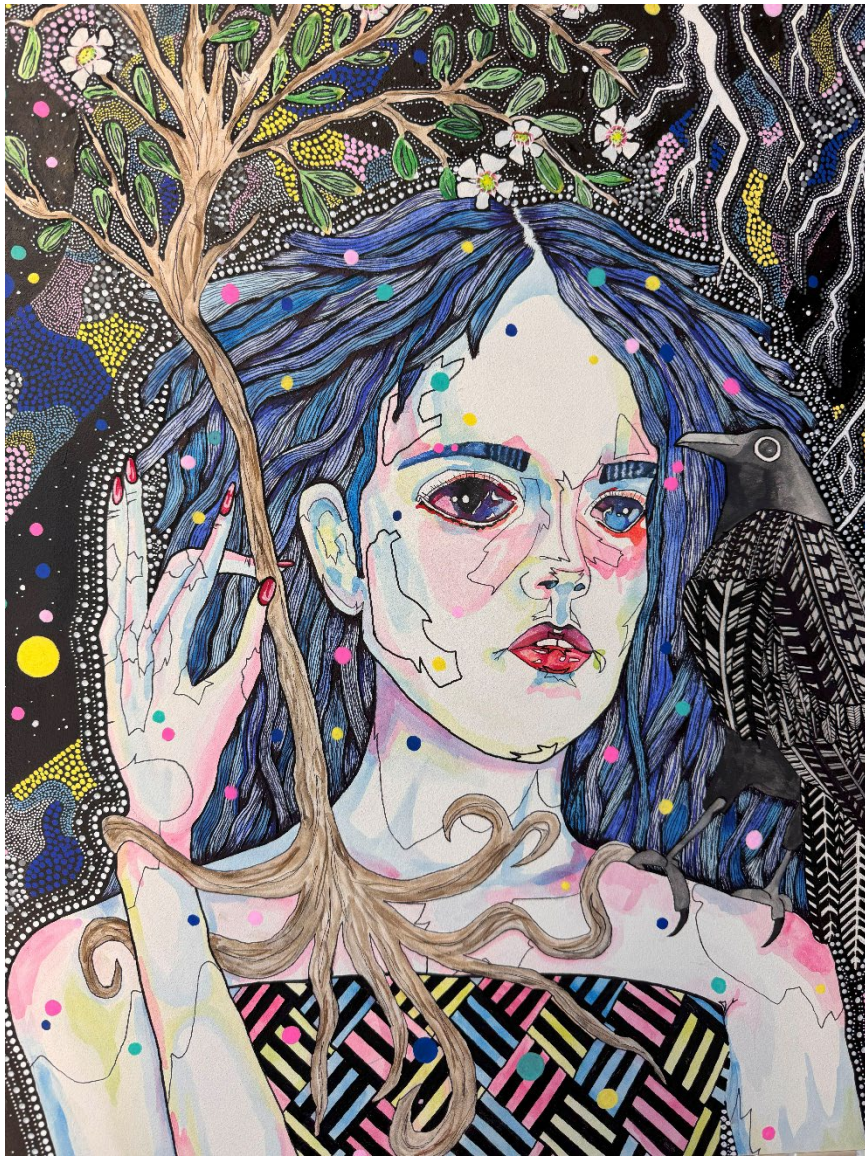
**Claire Sweet, Year 11**

***Urbanised Bushie***

Oil and pindan on board

This portrait is an embodiment of Sharon Creasy's, my maternal grandmother, fiery, mischievous nature and explores the idea of an 'urbanised bushie', someone who lives in the suburbs now, but still carries the spirit, habits and values of originally living in rural Australia. My artwork explores a dual identity, someone who hasn't left their roots behind, even if their environment has changed. This idea is symbolised through the pictures in the mirrors of the car, one of my Nannie as a child about to enter boarding school at age 8, and the other of the Perth city skyline. As the eldest of five children, Sharon grew up on million-acre sheep stations in the west Pilbara, including Winning, TOWERA, and Koodarrie, mustering sheep on horseback under the harsh sun, often saying she could ride before she could walk. This rugged upbringing shaped her fearless, no-nonsense spirit. Throughout her life, she has defied societal expectations, raising three children mostly on her own, while working multiple jobs and starting her own businesses. Her rebellious nature is clear in the way she challenges authority, takes risks, and unapologetically stands up for what she believes in. Though she now lives in suburbia, her heart remains connected to the land. This is represented with my collaboration of Pindan soil retrieved from the east Pilbara with oil paint in the background of my artwork. My Nannie is positioned in a car, reflecting her many trips up north in her old Toyota Prado. She is a true "urbanised bushie", someone shaped by the land, yet adapted to modern life, representing a hero and a rebel to me and many others.





**Felicity Finch, Year 11**

***Self Portrait***

Pen, watercolour and acrylic on board

Inspired by Del Kathryn Barton, my Self Portrait is an exploration of the human experience and the natural world, characterised by intricate patterns, bold colours and surreal imagery it celebrates the profound connection between humanity and nature.





**Shelby Sheridan, Year 10**

***Turtle***

Oil on board

Inspired by Dutch muralists TelmoMiel, my artwork combines realistic and abstract elements. The realistic turtle is juxtaposed with the hypercolour, man-made toy turtle, inviting the viewer to consider the impact of consumerism on our oceans.



**Layla Travis, Year 9**

***Self Portrait***

Acrylic on Canvas

Inspired by Pop Surrealism and the work of Argentinian painter and muralist Juan Manuel Sanabria I have painted a pixelated self-portrait using realistic rendering of fractured and enlarged facial features and block elements of colour