

PATRICK  
SCHOOL  
OF THE ARTS



2022

PUSH HARDER  
REACH FURTHER  
SOAR HIGHER



DANCE



# WELCOME



**Patrick School of the Arts (PSA) is now one of the most recognised performing arts institutions in Australia.**

We offer a Full Time Dance Program, in liaison with Swinburne University of Technology, catering to dancers seeking an exceptional career in the industry. It is a highly practical course based on the industry's needs, making it a physically and mentally demanding course, with entrance being highly competitive.

Delivering on behalf of Swinburne University of Technology (RTO 3059), we offer nationally accredited VET courses embedded in our programs.

**Acceptance into the course is by audition only.**

The program is designed to train and develop dancers in the areas of strength, flexibility, technique and creative expression. We seek to instill in students a passion, love and drive for the performing arts in order to establish long and successful careers in the entertainment industry.

Our graduates are seen in major productions across Australia and abroad. They are recognised as being trained to a higher athletic and physical standard than what has been seen in this country for a long time.

Artistic Director, Todd Patrick, is renowned for his dedication and unwavering attention to detail across all aspects of his specifically designed courses.

All of the teachers in the course are carefully chosen and are currently working in many areas of the Performing Arts.

Their passion and willingness to get the next generation polished and ready for action is our commitment.

All national accreditation for embedded VET courses will be subject to the Government's approval annually and confirmed in late November.

This program is designed to train and develop dancers in areas of strength, flexibility, technique and creative expression.



# COURSE OUTLINE

**The course runs on Mondays to Friday from 8:00am to 4:30pm.**

Subjects covered in the course include classical ballet, jazz, tap, musical theatre, contemporary, hip hop, acrobatics and vocal training. Additional private singing lessons are also available, at an additional cost.

The curriculum is also supported by yoga, pilates, gym and water-based cardio to encourage core muscular strength and support for mobility, flexibility and injury prevention.

Master classes are held throughout the year incorporating all aspects of the industry, with instruction from current industry professionals and international guests. Students perform throughout the year for producers, directors, choreographers and leading experts within the entertainment industry.

Performances include First Term showcase, Mid-Year showcase and End of Year showcase.



Patrick School of the Arts is proud to work with Swinburne University of Technology to offer nationally accredited VET courses through our Dance program. Dance students will be required to complete all units listed below that will be delivered by Patrick Studios Australia in first and second years.

## DANCE ACCREDITED COURSES

### FIRST YEAR CERTIFICATE II IN DANCE

BSBWOR203	Work effectively with others
CUADAN201	Develop basic dance techniques
CUADAN202	Incorporate artistic expression into basic dance performances
CUAIND201	Develop and apply creative arts industry knowledge
CUAPRF201	Prepare for performances
CUAWHS101	Follow safe dance practices
CUAWHS201	Develop a basic level of physical condition for dance performance
CUADAN203	Perform basic jazz dance technique
CUADAN206	Perform basic ballet technique
CUADAN105	Develop foundation street dance technique

### FIRST YEAR CERTIFICATE III IN DANCE

CUACHR301	Develop basic dance composition skills
CUADAN202	Incorporate artistic expression into basic dance performances
CUADAN301	Integrate rhythm in dance or movement technique
CUAIND301	Work effectively in the creative arts industry
CUAPRF307	Develop performance techniques
CUAWHS301	Condition the body for dance performance
CUADAN305	Increase depth of jazz dance technique
CUADAN306	Increase depth of ballet dance technique
CUADAN311	Increase depth of tap dance technique
CUAMUP301	Prepare personal appearance for performances
CUAPRF306	Develop musical theatre techniques
CUADAN308	Increase depth of contemporary dance technique
CUADAN309	Increase depth of street dance technique
CUAPRF304	Develop audition techniques

## DELIVERY OF VET COURSES

**SECOND YEAR CERTIFICATE IV IN DANCE**

CUACHR403	Develop choreography skills
CUADAN303	Develop dance partnering techniques
CUADAN407	Develop expertise in dance performance technique
CUAPRF404	Refine movement skills for performance
CUAPRF405	Rehearse technique for performance
CUAPPR404	Develop self as artist
CUAWHS401	Apply movement & behavioural principles to physical conditioning
CUAPRF304	Develop audition techniques
CUADAN403	Develop expertise in jazz dance technique
CUADAN410	Develop expertise in tap dance technique
CUAPRF402	Develop conceptual and expressive skills as a performer
CUAPRF406	Use technique in performance
CUAPRF407	Develop expertise in musical theatre techniques
BSBCRT402	Collaborate in a creative process

**SECOND/THIRD YEAR DIPLOMA OF DANCE (ELITE PERFORMANCE)**

BSBCRT501	Originate and develop concepts
CUACHR501	Create and perform complex dance pieces
CUADAN501	Refine ballet technique
CUADAN502	Refine ballet performance skills
CUADAN505	Refine contemporary dance technique
CUADAN507	Refine dance partnering technique
CUAIND401	Extend expertise in specialist creative fields
CUAIND402	Provide freelance services
CUAMUP501	Apply theatrical make up and hairstyles
CUAPRF410	Develop on-camera performance skills
CUAPRF503	Prepare for performances in a competitive environment
CUAPRF502	Develop own sustainable professional practice
CUAWHS402	Participate in gym and weight training for performances
CUAWHS403	Incorporate anatomy and nutrition principles into skill development
CUAWRT501	Write about dance



# FEEDBACK

The teaching faculty continually liaise with the Directors of Patrick School of the Arts to follow the individual progress of each student.

Students have a number of core teachers who develop their technique and undertake regular assessments.





# SUPPORT & WELFARE

As well as support from our directors and performing arts managers, Patrick School of the Arts students also have access to Swinburne University of Technology's counselling services.

The team is committed to assist you in any mental health concern you may have, so you can continue to thrive and achieve your academic goals.

We will support you if you are experiencing:

- Crisis – if you're acutely distressed and needing immediate support on campus
- Relationship and/ or family issues
- Academic and general stress
- Grief and loss
- Loneliness and isolation
- Depression, anxiety, and other mental health issues

**We offer comprehensive services run by our dedicated team of mental health clinicians with a range of specialities, including international and Aboriginal communities, people of colour, anxiety and depression, LGBTI, sexual assault, domestic violence, Asperger's and ADHD.**

**Depending on your identified difficulties and needs, we can suggest strategies for dealing with your thoughts, feelings and emotions through individual counselling and group workshops such as Mindfulness.**



# UNIFORM

## FEMALE

- Black high-waisted booty shorts (Jazz)
- Black high-waisted leggings (Jazz)
- Black crop top (Jazz)
- Black tank leotard (Jazz)
- Black fashion leotard (Jazz/Musical Theatre)
- Black open back leotard (Ballet)
- Black lace wrap ballet skirt (Optional)
- Ultra soft convertible pink tights (Ballet)
- Ultra soft convertible black tights (Ballet/Jazz)
- Black fishnet tights (Musical Theatre)
- Pink ballet shoes
- Black chorus shoes
- Black tap shoes
- Black jazz shoes (split sole from Bloch/Energetiks/Capezio)

## MALE

- Black unitard (Ballet)
- Black ballet tights (Ballet)
- Black shorts (Jazz)
- Black singlet (Jazz)
- Support (from Bloch/Energetiks/Capezio)
- Black ballet shoes
- Black tap shoes
- Black jazz shoes (split sole from Bloch/Energetiks/Capezio)

Additional appropriate black rehearsal wear may be adorned during arts classes.

No offensive or outlandish clothing is to be worn.



# FEE STRUCTURE

**The total cost for the 2022 Patrick School of the Arts Dance program is a total of \$11,500. A non-refundable prepayment of \$1,000 is due on October 1, 2021. The remaining \$10,500 will be paid throughout 2022.**

Direct Debit Payment is available, and can be arranged to occur on a weekly, fortnightly or monthly.

Please contact Accounts for more information.

Email: [accounts@patrickstudiosaustralia.com.au](mailto:accounts@patrickstudiosaustralia.com.au).

Concession rates are also available to eligible students.

Students may be eligible for Government funding under the skills first program, refer to the link below. For eligible students, the fee is comprised of two components, the PSA fee and the tuition fee for the embedded course/s through Swinburne University of Technology (SUT).

**[www.swinburne.edu.au/current-students/ manage-course/ fees/loans-discounts/skills-first/](http://www.swinburne.edu.au/current-students/manage-course/fees/loans-discounts/skills-first/)**

Concession rates are available to eligible students in Certificates II, III or IV for the Swinburne tuition fee component. Students who hold a Health Care Card are eligible for the concession rate, please refer to this link:

**[www.swinburne.edu.au/current-students/ student-services-support/financial/concessions/](http://www.swinburne.edu.au/current-students/student-services-support/financial/concessions/)**



## FIRST YEAR DANCE

**First Year Dance** includes tuition fees for Certificate II in Dance CUA20113 and Certificate III in Dance CUA30113, the accredited courses provided in conjunction with Swinburne University of Technology.

### WITHOUT CONCESSION

Components			
<b>Total</b>	\$11,500	PSA Fee	\$7,462
		Swinburne	
<b>Prepay</b>	-\$1,000	Tuition Fee	\$4,038
<b>Remainder</b>	\$10,500		

### WITH CONCESSION

Components			
<b>Total</b>	\$8,270	PSA Fee	\$7,462
		Swinburne	
<b>Prepay</b>	-\$1,000	Tuition Fee	\$808
<b>Remainder</b>	\$7,270		

## SECOND YEAR DANCE

**Second Year Dance** includes tuition fees for Certificate IV in Dance CUA40113, the accredited course provided in conjunction with Swinburne University of Technology.

### WITHOUT CONCESSION

Components			
<b>Total</b>	\$11,500	PSA Fee	\$8,236
		Swinburne	
<b>Prepay</b>	-\$1,000	Tuition Fee	\$3,264
<b>Remainder</b>	\$10,500		

### WITH CONCESSION

Components			
<b>Total</b>	\$8,889	PSA Fee	\$8,236
		Swinburne	
<b>Prepay</b>	-\$1,000	Tuition Fee	\$653
<b>Remainder</b>	\$7,889		

## SECOND/THIRD YEAR DANCE

**Second/Third Year Dance** includes tuition fees for Diploma of Dance (Elite Performance) CUA50113, the accredited course provided in conjunction with Swinburne University of Technology.

### WITHOUT CONCESSION

Components			
<b>Total</b>	\$11,500	PSA Fee	\$5,094
		Swinburne	
<b>Prepay</b>	-\$1,000	Tuition Fee	\$6,406
<b>Remainder</b>	\$10,500		

There is concession at Cert IV level but not at Diploma.

The Patrick School of the Arts fee covers costs such as: dance class hours not mapped to accredited courses, specialist visiting artists, in-house health professionals, industry panels, performance costs such as costumes, venues, sets/lights/audio, operational staff, out-of-hours rehearsals, promotions, show costs, maintenance and campus services costs. A breakdown of this fee will be provided prior to enrolment.

# ATTENDANCE

**100% attendance is expected from all students at all scheduled classes, performances and special events throughout their time at Patrick School of the Arts. Failure to uphold a 95% attendance rate during their time here will result in a review of the student's enrolment within Patrick School of the Arts.**

This is to uphold a professional standard and also to meet the attendance criteria of Swinburne University of Technology.

For safety and PSA protocol, all students are expected to sign in at reception every day upon arrival and exit. If for any reason students are anticipating their absence, arriving late to school, or if a student needs to leave school early, the student must contact their coordinator as soon as possible.

**Phone: (03) 9521 1735**

Email: [nathan@patrickstudiosaustralia.com.au](mailto:nathan@patrickstudiosaustralia.com.au) or [info@patrickstudiosaustralia.com.au](mailto:info@patrickstudiosaustralia.com.au)

Patrick School of the Arts accepts students on the basis that they are in good health and fitness. Should anything prevent students from engaging in physical training, they must notify Reception or their liaisons immediately to avoid any further risk to their health. In the event of an injury occurring in class, students must report immediately to the front desk in order for the appropriate medical aid/support to be administered by the staff. First Aid kits are available at reception for any minor injuries.

**Please note: Panadol or any other form of pharmaceutical medications cannot be given to any student.**





# TERM DATES

PERIOD	START	FINISH
INDUCTION DAY	Wednesday January 26, 2022	
TERM 1	January 26, 2022	April 8, 2022
TERM 2	April 26, 2022	July 1, 2022
TERM 3	July 18, 2022	September 16, 2022
TERM 4	October 3, 2022	December 4, 2022

*These dates are indicative only and are not finalised.*







# TODD PATRICK FOUNDER & STUDIO DIRECTOR

**Patrick School of the Arts (PSA) is now one of the most recognised performing arts institutions in Australia.**

Todd Patrick is a renowned choreographer and artistic director based in Melbourne, Australia. Todd's long spanned career has seen him travel all over the world working for some of the most industry respected companies as both a dancer, choreographer and creative director.

He began his career with the internationally acclaimed company, Walt Disney Studios before beginning an impressive stint across Europe and Asia with the prestigious Lido in Paris, France, Royal Palace Strasbourg, W hotel South Korea and Jupiter's Casino in the Gold Coast, Australia.

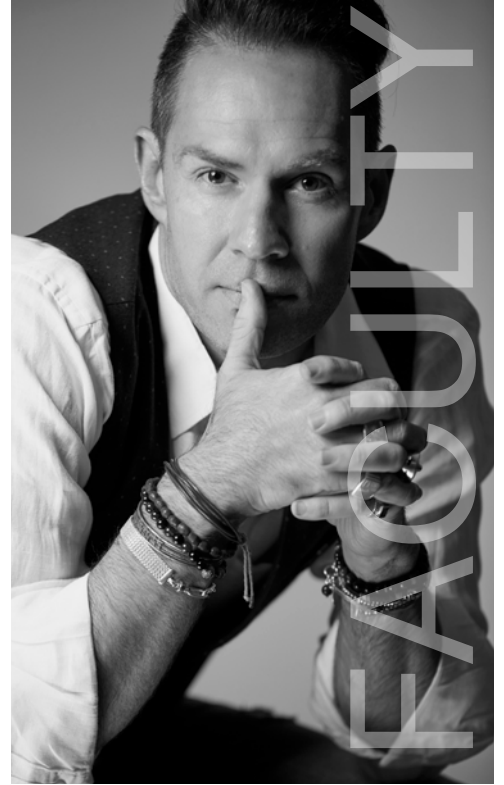
The credits that Todd has to his name as a choreographer and dancer are nothing short of impressive, having worked with the likes of Crown Melbourne and Star City, Australian pop acts Vanessa Amorosi, Ricki-Lee Coulter, Zoe Badwi, Kate Ceberano and Dannii Minogue not to mention MAC Cosmetics, Christian Dior, Versace, Issey Miyake, Chanel and Gucci alongside Giselle Bundchen, John Galliano and Karl Lagerfeld.

In the corporate world, Todd has choreographed events for some of Australia's biggest companies: KPMG, Chadstone the Fashion Capital, NAB, Victoria Racing and Price Waterhouse Coopers.

Todd has several cabaret shows constantly touring Australia in the form of Cabaret de Paris currently touring New Zealand and Viva Las Vegas.

Todd's most recent stint has been as a choreographer for Channel Ten's Offspring TV show.

Todd founded Patrick Studios Australia, now Patrick School of the Arts, which altogether encompasses a Full-time Performing Arts, Musical Theatre and Elite Course as well as Patrick Academy - High School for the Performing Arts to specifically train dancers for a professional career in the arts. In addition, he started Patrick Management to help students and professional performers break into the industry and foster their career. His students and talent are now following in his footsteps and can be seen around the world in shows like Wicked, Shout, Chicago, 42nd Street and Hamilton and in venues across Europe including The Lido, Moulin Rouge and La Nouvelle Eve. His students frequent in music videos, TV programs, cruise ships, commercial functions and fashion parades with highly acclaimed directors and choreographers.



# TEACHING

# NATHAN PINNELL TERTIARY COORDINATOR

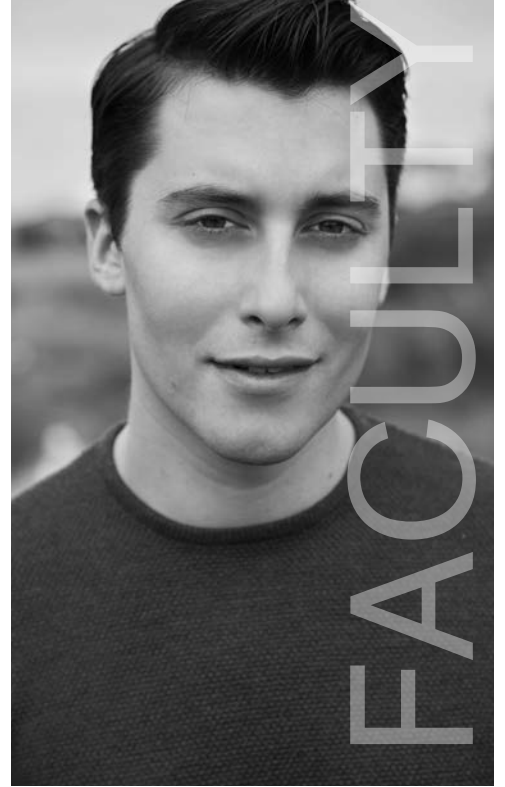
**Nathan is an award-winning performer with a career spanning over two decades. His professional career began at the age of 9 in two Opera Australia productions, Falstaff and Manon Lescaut.**

As a young boy he also appeared in numerous television commercials such as Sea Monkey's, Australia Post and Meadow Lea. Nathan has been involved in Melbourne Fashion Week, re-opened Hamer Hall Arts Centre, performed for the Prime Minister at Australia House in London and took part in launching for Mercedes Benz.

His theatre credits include Singin' In The Rain (Dance Captain/Swing/Cover: Production Tenor and Dialect Coach), Hugh Jackman: Broadway To Oz (Dance Captain/Featured Ensemble), Anything Goes (Dance Captain/Swing/Cover: Billy Crocker), Baz Luhrmann's Strictly Ballroom: The Musical as Liam Lamb (Understudied and performed Ken Railings, Nathan Starkey and Clarry Welch), Legally Blonde as Carlos (Savoy, West End), West Side Story as Baby John, Chicago: The Musical for which he received a Green Room Award (Cover: Mary Sunshine), Dusty: The Original Pop Diva as Young Tom, We Will Rock You (Ensemble and Swing), Chitty Chitty Bang Bang, High School Musical (Cover: Jack Scott/Ryan Evans), Eurobeat: Almost Eurovision and Rhythm and Runners (Melbourne Fringe Festival). For the Production Company: Gypsy (Tulsa), receiving Best Supporting Actor for the Theatre People Pro Choice Awards, Boy From Oz (Chris Bell), Promises Promises, 42nd Street, Sweet Charity and The Music Man.

Television credits include: It Takes Two, Blue Heelers, So You Think You Can Dance, The Footy Show, Australia's Most Wanted, Wicked Science, The Morning Show, Morning's with Kerrie Anne and Sunrise. Nathan was also Assistant Choreographer for Caroline O'Connor and Strictly Sydney Mardi Gras Finale Float 2014.

Nathan has been teaching and choreographing for various universities, full time courses and dance studios for the last two decades. He is renowned for his progressive work as a passionate performer, teacher and artist within the industry and continues to create and work with the worlds finest.



# TEACHING



# ACCOMMODATION

Patrick School of the Arts does not have its own on-campus student accommodation, however there are several housing and accommodation options available.

Students can choose to:

- Rent an apartment, unit or house
- Share an apartment, unit or house
- Reside in student apartment complexes or hostels
- Live with a family in a home stay or boarding arrangement

Please note that January/February is a busy time with many students all looking for accommodation and that prices and facilities vary. The following list includes some of the residences available in Melbourne of which PSA does not endorse any particular accommodation services, so please make sure you investigate the residences directly for more information and to find accommodation that suits your particular needs.

## RENT AN APARTMENT/UNIT/HOUSE

*(costs are an indication only)*

Renting your own apartment or house through a Real Estate Agent or a private landlord offers students privacy and independence. Most rental properties are unfurnished so initial setting up costs can include rent, food, telephone calls, gas and/or electricity for 12 months. (You may also need to buy furniture and other household goods). A bond will usually need to be paid before you move in.

Weekly rent:

- Flat/Apartment: one bedroom – A\$200 – A\$350
- Flat/Apartment: two bedroom – A\$170 – A\$350 per person
- House: allow A\$120 – A\$250 per person

When you share a flat, apartment or house everyone shares the kitchen, bathroom, laundry and living rooms. You have your own bedroom.

## SHARE AN APARTMENT/UNIT/HOUSE

Moving into an established household that has a vacant bedroom is often an easier and less costly option than leasing a vacant house or flat. You will pay rent for your own bedroom and share the bathroom, kitchen and living areas with other people living in the household.

Please notify Patrick School of the Arts if you are looking to share accommodation and we will attempt to connect with other PSA students wishing to share accommodation.

[www.flatmates.com.au](http://www.flatmates.com.au)

[www.flatmatefinders.com.au](http://www.flatmatefinders.com.au)



# ACCOMMODATION

## STUDENT APARTMENT OR PRIVATE HOSTEL

*(costs are an indication only):*

---

### **Melbourne Connection Traveller's Hostel**

Ph: +61 3 9642 4464 e: [info@melbourneconnection.com](mailto:info@melbourneconnection.com) [www.melbourneconnection.com](http://www.melbourneconnection.com)

---

**The Friendly Backpacker** Ph: +61 3 9670 1111 or 1800 249 207 e: [renouf@friendlygroup.com.au](mailto:renouf@friendlygroup.com.au)  
[www.friendlygroup.com.au](http://www.friendlygroup.com.au)

---

**Arrow on Swanston** e: [accommodation@arrowonswanston.com.au](mailto:accommodation@arrowonswanston.com.au) Ph: +61 3 9225 9000  
[www.arrowonswanston.com.au](http://www.arrowonswanston.com.au)

---

**Merlin Apartments** e: [jyew@merlinproperties.com.au](mailto:jyew@merlinproperties.com.au) Ph: + 61 3 9670 7788  
[www.merlinproperties.com.au](http://www.merlinproperties.com.au)

---

**Uni Lodge on Flinders** e: [unilodge.flinders@unilodge.com.au](mailto:unilodge.flinders@unilodge.com.au) Ph: +61 3 9224 1500  
[www.unilodge.com.au](http://www.unilodge.com.au)

---

**Uni Lodge on Swanston** e: [unilodge.swanston@unilodge.com.au](mailto:unilodge.swanston@unilodge.com.au) Ph: +61 3 9224 7888

---

**UCA Melbourne – University City Apartments** e: [info@unicityapartments.com.au](mailto:info@unicityapartments.com.au)  
[www.unicityapartments.com.au](http://www.unicityapartments.com.au)

---

**Carlton College Hostels** e: [admin@carltoncollege.com.au](mailto:admin@carltoncollege.com.au) Ph: + 61 3 9347 3238  
Fax: +61 3 9842 3813 [www.carltonmelbournecollege.com.au](http://www.carltonmelbournecollege.com.au)

---

**Bouverie Residence** e: [admin@rooms.net.au](mailto:admin@rooms.net.au) Ph: + 61 3 9347 8000 [www.rooms.net.au](http://www.rooms.net.au)

---

**Dalkeith Hostel** e: [dalkeithhouse@hotmail.com](mailto:dalkeithhouse@hotmail.com) Ph: 0409 016 521

---

**Elgin Lodge** e: [elginlodge@dodo.com.au](mailto:elginlodge@dodo.com.au) Ph: + 61 3 9859 4862 [www.rentfast.com.au](http://www.rentfast.com.au)

---

**Georges Terrace** e: [georgeterrace@hotmail.com](mailto:georgeterrace@hotmail.com) Ph: + 61 3 9354 9991

---

**Grattan House** e: [grattanhouse@optusnet.com.au](mailto:grattanhouse@optusnet.com.au) Ph: + 61 3 9404

---

**Monet Residence** e: [admin@rooms.net.au](mailto:admin@rooms.net.au) [www.rooms.net.au](http://www.rooms.net.au)

---

**YWCA Flats** e: [rhouse@ywca.net](mailto:rhouse@ywca.net) w: Ph: + 61 3 9429 4374 [www.ywca.net](http://www.ywca.net)

---



## LIVE WITH A FAMILY (HOMESTAY)

*(costs are an indication only)*

If this is your first experience of living away from home you may find the transition to tertiary life much easier if you don't have to adjust to independent living at first. Homestay or full board accommodation is usually provided in a suburban household with your own fully furnished room, 2-3 meals per day and all household bills except telephone calls are included in the overall cost of approximately A\$180 A\$190 per week. A Private Homestay Consultant can arrange a place for you. The placement fee is usually \$100.

Below is a list of some private Home stay consultants:

- **Australian Student Accommodation Placements (ASAP)** Contact: David Wood  
e: davidw@studenthomestay.com.au Ph: +61 3 9812 0761 **www.studenthomestay.com.au**
- **Familystay Australia** Contact: Margaret Vella e: familystay@bigpond.com  
Ph: +61 3 9574 7476
- **Homestay Victoria** Contact: Stefan Morgan e: sandra@homestay-australia.com  
Ph: +61 3 9642 1566 M: 0412 036 579 **www.homestay-australia.com**
- Student Accommodation Services e: sacomm@studentaccommodation.com.au  
Ph: + 61 3 9495 0007 **www.studentaccommodation.com.au**

*Disclaimer: Patrick School of the Arts takes no responsibility for the accuracy of the above information. The accommodation facilities referred to on this site are not owned or operated by Patrick School of the Arts, nor do they have any affiliation with Patrick School of the Arts. Patrick School of the Arts does not endorse the use of any of the accommodation options listed we are simply providing public available information. Patrick School of the Arts takes no responsibility for accommodation or the services provided by these organisations. Patrick School of the Arts welcomes students from around the country and offers advice and assistance on re housing, finding work and general advise in order to become home established in a new state.*

# TRANSPORTATION

## TRAMS

**Tram number: 6 Glen Iris** runs from Swanston St in the city to High Street, and along High Street, terminating at Malvern Road, Glen Iris.

**Tram number: 78** North Richmond to Prahran travels along Chapel Street and stops on the corner of High Street.

## TRAIN

**Sandringham Line:** The campus is a few minutes walk from Prahran or Windsor stations

Visit Public Transport Victoria ( PTV ) and find the quickest way to get to your Melbourne Polytechnic campus.

Furthermore, download the brilliant **Citymapper app** to assist you with your public transport options to PSA.





# CAMPUS

Patrick School of the Arts is based in Prahran, at the Melbourne Polytechnic campus. The facilities are based on the Australian Institute of Sport's dynamic training facilities catering for all aspects of a performer's needs, including:

- An in-house gym and pilates studio
- Fully air conditioned and heated studios
- Extensive wardrobe departments
- Access to all the facilities that Melbourne Polytechnic has to offer.



# AUDITIONS

Entry to Patrick School of the Arts is strictly by audition only. Students are selected on the basis of talent and their future potential to benefit from the training provided.

During their audition, each candidate will audition alongside a large volume of other auditionees in an audition with a dancing component.

Auditions are held  
twice a year, in July  
and in November

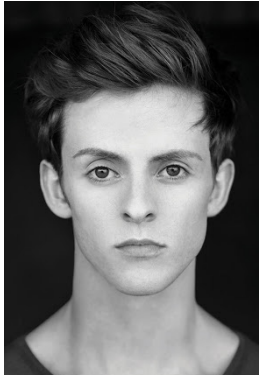






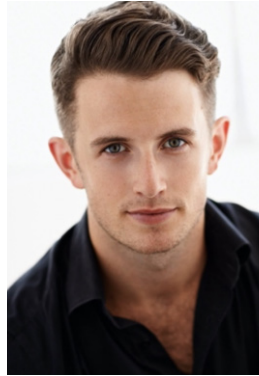
## ALUMNI

Our Alumni have performed in 70+ shows all over the world.



**Adam Noviello**

Priscilla, Queen of the Desert; Matilda



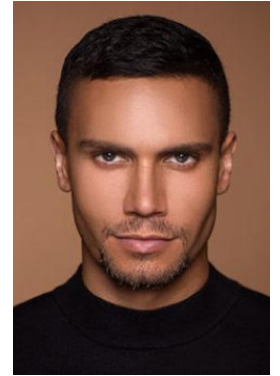
**Alex Given**

South Pacific; Georgy Girl; Holding the Man; Book of Mormon



**Elandra Eramiha**

Kiss of the Spider Woman; Aladdin; Bring it On; Memphis



**Euan Doidge**

Marius - Les Miserables; Priscilla, Queen of the Desert - Felicia



**Julian Ardley**

The King & I; Dance Captain - Lido



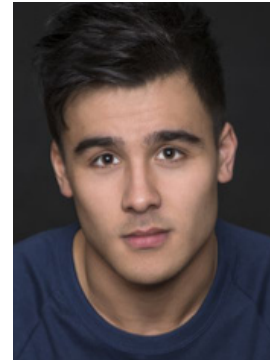
**Karli Dinardo**

Dance Captain - Hamilton US; Flashdance US; Moulin Rouge - Broadway



**Melanie Hawkins**

Strictly Ballroom; Wicked; King Kong; Saturday Night Fever - Annette



**Nick Len**

MD for Barry Humphries West End Tour; Thoroughly Modern Millie UK



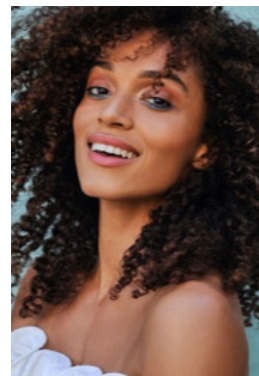
**Nick Phillips**

Ellen DeGeneres Show; DWTS USA; Magic Mike



**Samantha Dodemaide**

Dorothy - The Wizard of Oz; Charity - Sweet Charity; Chicago; Singing in the Rain; Anything Goes; Evita



**Sophia Laryea**

The Lion King; Vogue



**Taylor Scanlan**

Cats Asia Tour; Lord of the Flies; Charlie and the Chocolate Factory



## **PATRICK MANAGEMENT**

Patrick Management is dedicated to managing and developing the careers of performing artists. We are passionate about nurturing and developing new talent, whilst taking pride in driving their careers forward. Achieving goals in an atmosphere of trust and respect is our primary objective. We represent artists with whom we feel a particular personal and artistic affinity. We believe this is the best way to support the industry and our clients with the greatest conviction and integrity.

We are proud to present both emerging artists, as well as the more experienced, whom are enjoying exciting careers both here and abroad.

Our agent, Steven Grace, has worked in the industry from a young age. After having a very successful career in film, television and theatre, he comes with a wealth of industry knowledge to impart onto all our clients. Having previously owned a production company with an agency, he is familiar with all aspects of the entertainment industry. He has worked and collaborated several times with Baz Luhrmann and multiple Oscar winner Catherine Martin as well as Vogue USA and Australia.

To discuss representation with Patrick Management, please contact

**Steven Grace on 03 9521 1735.**

Email: [info@patrickmanagement.com.au](mailto:info@patrickmanagement.com.au)



# STEVEN GRACE HEAD AGENT AT PATRICK MANAGEMENT

**Steven is an award-winning performer. His professional career has spanned over 25 years internationally.** Steven's recent work includes Dance Captain for The Sound of Music for the 2009/2010 Australian tour. Steven's previous projects include working on the creative team as assistant to the choreographer and Dance Captain on Strictly Ballroom the musical. He has also choreographed & co-directed an exclusive shoot for Vogue Australia with multiple Oscar winner Catherine Martin & Baz Luhrmann for Vogue Australia.

At age 10 he won the role of Luke in Strictly Ballroom. The film was a success and won 17 awards and 11 nominations worldwide including a Golden Globe® nomination for Best Picture. This began his long association with Baz Luhrmann and Oscar® winner Catherine Martin, with them he has been involved in many projects including the Opening Extravaganza of Fox Studios Australia, their production of A Midsummer Night's Dream and he played the role of lead tango dancer in the Oscar® nominated film Moulin Rouge, again for Best Picture. This established him as an Elite talent and working with the best from a young age.

Theatre includes Chicago on the West End, London, performing alongside Brooke Shields, Ashlee Simpson and original Wonder Woman Lynda Carter. He has also performed Chicago in Cyprus and in Australasia playing Fred Casely. Steven to date has played every male character in the show and has understudied and played the roles of Billy Flynn and Amos Hart as well as Dance Captain. Steven won a Green Room Award for Chicago in Australia. Other shows include Priscilla Queen Of The Desert, West End as Assistant Dance Captain. Australian Theatre includes Promises, Promises (The Production Company), The Boy From Oz- Role- Trick (TPC), Dein Perry's Steel City Australian and U.S Tour including Radio City Music Hall in New York, which made a history making season as the first Australian tap group ever to perform there. Fame and We Will Rock You as one of the Original Australian Cast hand picked by Queen themselves. He also was involved in the original workshops for the musical King Kong.





# PATRICK SCHOOL OF THE ARTS



Level 2, 140 High Street Prahran VIC 3181  
P (03) 9521 1735 | [info@patrickstudiosaustralia.com.au](mailto:info@patrickstudiosaustralia.com.au)

[www.psarts.com.au](http://www.psarts.com.au)

