



February 2018

The *Blackfriars Personal Presentation Policy* ensures there are clear guidelines about expectations in terms of uniform and grooming. At all times, students are ambassadors of the school and are expected to wear the uniform in a way that aligns with the school's identity. It is also very important that expectations regarding personal presentation and grooming be applied fairly and consistently to all students.

It is each student's personal responsibility to ensure they are presented in a manner that reflects the school's expectation. As many of our students catch public transport, it is also important they leave home and arrive at the school in accordance with the uniform policy guidelines.

It is pleasing that in most cases, the boys are wearing their uniform appropriately, however, there seems to be emerging variations to the uniform in a number of areas. Therefore, I would like to clarify these expectations for 2018.

- School socks with the summer uniform shorts must be the official Marle Grey Crew sock,
- Shoes must be leather AND of a formal style (no suede or canvas shoes and no leather style skate/street shoe),
- Extreme hairstyles which include shaved lines, mohawk style cuts or extreme variations in length between sections of the style are not in line with expectations,
- All boys must wear their blazer with their winter uniform to and from school in Term 2 and Term 3,
- The shorts from the co-curricular Nike soccer kit are not acceptable for Physical Education lessons
- All students must wear the school bucket hat during recess and lunch in Term 1, 3 and 4 or they will be asked to move to an approved shaded area as per the school's SunSmart Policy.

Enclosed with this letter are images of uniform items which do and do not meet our expectations in regard to shoes, the physical education uniform, hairstyles. We also have images of variations on the summer and winter uniforms that are acceptable and unacceptable. We understand families will need time to prepare for 2018 and so the purpose of this letter is to provide sufficient time prior to the beginning of next year so all boys present themselves appropriately.

It is our expectation that students will comply with the Blackfriars Personal Presentation Policy from the beginning of 2018. Parents of boys who fail to observe these expectations will be contacted and consequences for non-compliance will be enforced from the commencement of the 2018 school year.

As always, should there be extenuating circumstances as to why your son is unable to meet these expectations, please contact his Head of House to discuss a timely resolution.

The image of our school in the wider community is extremely important to us. Whether we like it or not, members of the public will make judgements about your son and the school based on how they present themselves. I ask for your cooperation as we work in partnership to raise the uniform and grooming standards of the boys in 2018.

School Shoes

Please note school shoes must stay within the following guidelines: Black Leather school style/formal shoe (no suede, canvas or skate/street shoes)



Physical Education Uniform



New style PE polo
(compulsory from 2019)



Old style PE polo
(transition period in 2018)



Soccer shorts not acceptable for
physical education lessons

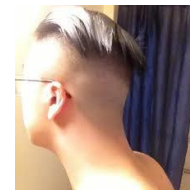
Hairstyles



Shaved lines



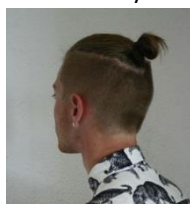
Mohawk styles



Extreme differences in length



Low sitting, neat pony tail/bun

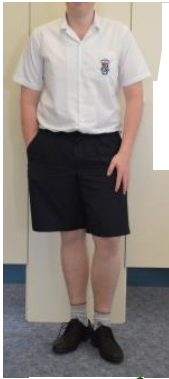


High sitting and/or messy pony
tail/bun



Hat – Compulsory Terms
1, 3 and 4

Summer Uniform



Short sleeve shirt, shorts and no tie



Tie can be worn when the school jumper is worn



Open neck summer shirt can be worn with the jumper, without a tie



Grey long pants can be worn with short sleeve shirt



Long sleeve shirt, shorts and tie



Tie must not be worn with short sleeve shirt

Winter Uniform



Long sleeves should not be rolled up



Long sleeve shirt, tie, long grey trousers and blazer (jumper may be worn under blazer)



Shorts must not be worn in winter