

# Road safety near schools

## Creating a safer environment for children and students



### Keeping children safe

Parking and speed restrictions at and near schools are in place to create a safer environment for children and students. They are also designed to improve road safety and traffic flow for everyone.

Primary school children (5–12 years old), particularly those under 9, are involved in more road accidents than any other age group. Children's cognitive abilities are still developing, so they don't often fully recognise or assess potential hazards, and we all must ensure we work together to create a safe environment for them.

To help maintain the safety and wellbeing of the community, the council's Community Safety officers conduct regular patrols around schools and may issue fines to illegally parked vehicles.

### School zones

- School zones have a speed limit of 25km/h when a child is present – on the road or footpath or median strip, even if they are on a bike.
- A child is any person less than 18 years of age and includes a student of any age wearing school uniform.
- This applies 24 hours a day, 7 days a week throughout the year.
- School zones are marked with signs like this and where possible white zigzag lines on the road – as shown in the photo below.



Slow down near schools, school buses and parked cars as there is a greater chance that a child could run out from the vehicle.

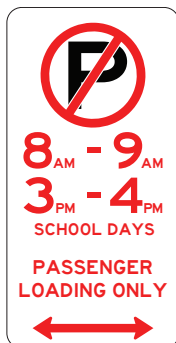
# Drop-off and pick-up zones (Kiss and drop)

## What is a pick-up and drop-off zone?

These are designated areas outside schools for drivers to pick-up or drop-off children during school start and finish times.

They are usually located near a pedestrian exit gate, alongside the kerb or as an indented bay or can be found within school grounds.

Signs like these will clearly identify the designated zone.



## How do the zones work?

- No parking is permitted in these zones.
- You must not leave your vehicle unattended, queue or wait in this zone for more than two minutes.
- If you need to leave your vehicle, or your child is not waiting in the pick-up and drop-off zone, you must move out of the zone and find a legal parking space or drive around and re-join the queue.
- Keep the queue flowing to enabling others to line up behind your vehicle. If you are the first driver in line, move forward to the start of the pick-up line.
- Ensure children enter and exit your vehicle from the footpath (kerb side), not the road.
- Don't double park as your child will need to pass between vehicles to reach you.

# School crossings

- School crossings have signs and dashed lines across the road.
- School crossings may also have flashing lights, flags or be monitored by students and teachers.
- Drivers must not enter a crossing when a child is crossing or about to cross.

## When school crossings are in operation

School crossings are in operation when flags are displayed, lights are flashing and/or crossing monitors are present.

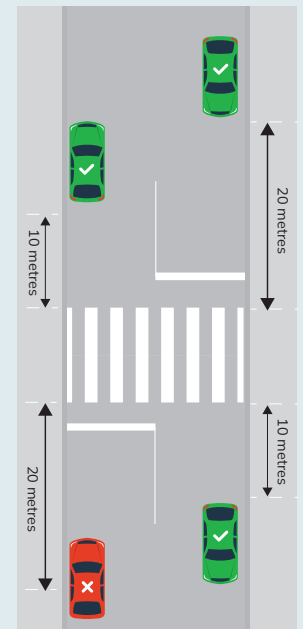
Children entering the crossing may not be visible to an approaching car so it is important that you do not stop during this time:

- within 20 metres before the crossing
- within 10 metres after the crossing

Stopping to let a child out or pick a child up within this zone is an offence.

These restrictions do not apply when flags are not displayed and the crossing is unattended.

However, if there is also a 'No Stopping' sign at the approach to the crossing you must obey it at all times.



# Parking restrictions

## 'No stopping' signs and yellow lines

You must not stop your vehicle for any period of time where there are yellow lines on the road or 'No stopping' signs.

Be aware of designated time periods displayed on 'no stopping' signs.

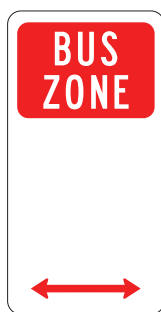


## Bus zone

You must not stop within a bus zone at any time – only public buses are permitted in bus zones.

No stopping applies 20 metres before and 10 metres after a bus stop.

Passenger drop-off or pick-up is not permitted.

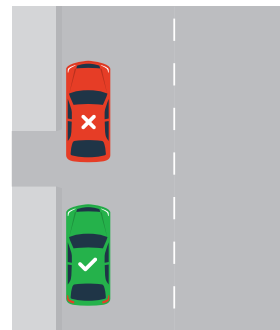


## Footpaths and verges

Parking on footpaths and verges is prohibited.

## Driveways

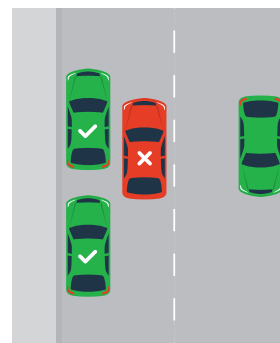
You must not park on or across a driveway to any private or public property, including your own property.



## Double parking

Drivers must not stop next to a vehicle already stopped or parked.

Double parking is illegal and poses a danger around schools when children are entering or leaving.



## How you can help

- Educate and direct your child to wait on the footpath within the pick-up and drop-off area, and to only enter the vehicle once it has stopped.
- If someone else is picking up your child, explain the pick-up and drop-off zone procedure to them.
- Talk to your child and have a plan for what they need to do if you are not there.
- Children take notice of what you do, so set a good example by behaving safely. Obey the parking signs and restrictions around schools.
- Consider the safety of other children as well as your own.

### For 5 to 8 year olds

- Help your child to become familiar with all aspects of the road environment including signs, traffic lights and crossings. Always use safe crossing places.
- Teach children cycling skills in a safe area, such as a park or playground. If they are riding a bike to school, plan a safe route for them to take.

### For 9 to 12 year olds

- Take the time to explain the road rules in simple terms, for example – right of way, and what to do at intersections.
- Go for bike rides with your children to make sure they understand safe cycling behaviour.