

ENTRY TO TEACHING GUIDE

SECOND EDITION



STUDY WORK GROW

ENTRY TO TEACHING 2022

A guide to a career in Teaching explained – from university programs offered in Australia for students commencing study in 2022, to the steps you'll need to take in order to teach. Created by Study Work Grow Pty Ltd in 2021.

VERSION 1

The programs in this guide may be subject to change at any time. In our experience, universities may choose to change their entry requirements and processes and you should always check directly with the university for the latest information. We have verified many of the programs directly with the universities, and in some cases the information in this guide may differ from that published on the university website or in their printed material.

As such, this is Version 1 of the Entry to Teaching Guide. We will continue to check with the universities for any updates, and may release more versions throughout the year.

IN THIS GUIDE

ABOUT TEACHING AS A CAREER

TERMS YOU NEED TO KNOW

WORKSTYLE AND LIFESTYLE MATCHING

PATHWAYS TO BECOMING A TEACHER

TRAINING OPTIONS

ITE PROGRAMS

UNDERSTANDING REGISTRATION

Most of the programs in this guide have been **verified by the universities**, but some universities have not yet finalised and confirmed their programs. In most of these cases, we know the programs are likely to be very similar to those offered last year.

We'd urge you to do your own research or contact the future students department of your chosen university directly to verify course details, pathways and application criteria before applying.

The information contained under each university offerings page in the Study Work Grow Entry to Teaching 2022 Guide remains the intellectual property of its respective owners.

EDUCATE AND INSPIRE THE NEXT GENERATION

So you think you might want to become a teacher?

Whether you choose to teach the youngest members of society in early childhood or guide school leavers into their next steps, you'll need good communication skills, a sense of humour and quite a bit of patience.

If you're considering a career as a teacher, this handbook could help you understand the necessary attributes for teaching, and to decide if this would suit your lifestyle and goals.

Once you've worked out if teaching is a good fit for you, you'll learn about the entry and training process, then find an Initial Teacher Education (ITE) course that suits your needs.

We'll talk about different pathways that could also be an option for you, the importance of a 'Plan B', and the registration process that you'll be required to go through.

Let's discover if teaching could be the right career for you...



TERMS YOU NEED TO KNOW

Teaching has some specific words and terms that you'll need to learn if you want to work in the field.

Teacher - a professional with a recognised qualification in education

Teacher's Aide - helps classroom teachers with non-teaching duties such as preparing resources and teaching materials, and performing general administrative classroom tasks

Early Childhood Educator - ECE's work with young children between two and five years of age to promote their learning and help them to develop key skills for the future

Pedagogy - the style and approach to teaching reflected in the theories and practices used

Cognitive - the mental processes involved in learning including thinking, knowing, remembering, judging, and problem-solving

Duty of care - teachers must do everything reasonably practicable to ensure students are not exposed to risks to their health or safety / kept safe whilst at school.

This is just the tip of the iceberg; if you come across any other terms you want to remember, note them down here:

WHERE TEACHERS WORK

Before you delve any deeper into the world of Teaching, let's start by looking at where teachers and educators work. This is important because if you become a teacher then you'll be working like this; and if you don't think you would enjoy this kind of work environment then you may need to rethink becoming a teacher.

Teachers are needed across Australia

Teachers are found all over Australia in a range of environments, including schools, kindergartens, early childhood centres, universities, vocational training providers and also in public organisations and private businesses. Generally, there is high demand for teachers from rural and regional locations - meaning there's not only good pay available, but opportunities to experience living in other parts of Australia.

Variety

As a Teacher you could choose to work with any age group that appeals to you, from babies right through to adults. Alternatively you can choose to specialise in a field that you love e.g. dancing, music, languages. You could be working in a mainstream school (public or private), alternative school, working in facilities with students with special needs, children's hospital classrooms, or you could be working in universities, registered training organisations, prisons, and many other organisations.

Work Environment

There are limited opportunities to work from home, although there may be more opportunities post-COVID. There are jobs where you could be working remotely from your students (e.g. School of the Air). Otherwise you could be working in a classroom, a lecture theatre, in offices, or even outside in nature. Teaching environments can be quite varied.



Jobs available across Australia



Limited opportunity to work from home or online



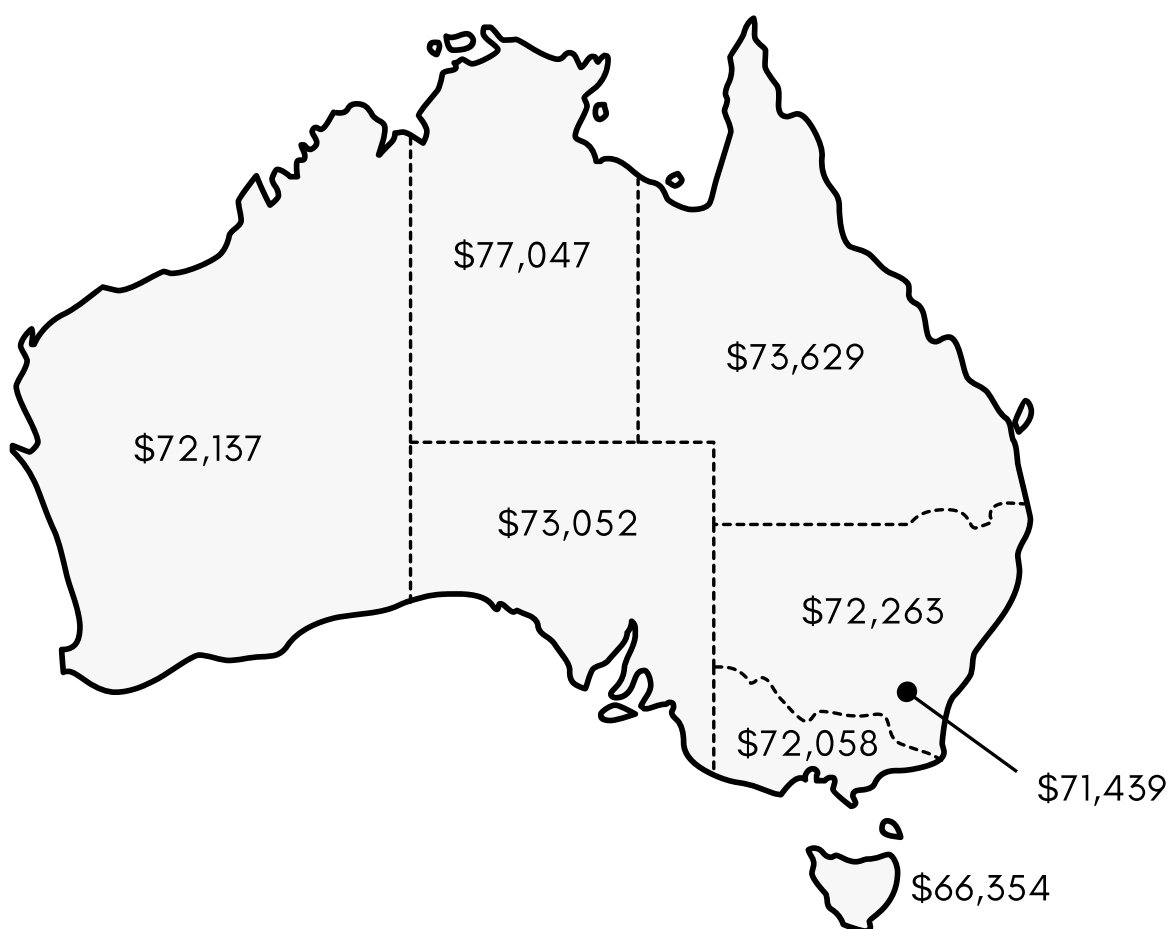
Rural and remote teachers in high demand

- Yes, I could see myself working here
- No, I might need to consider different options

SALARY

Teachers usually earn more than the national average income. Early Childhood Teachers tend to earn less than Primary and Secondary teachers, who earn less than Special Education teachers and Tertiary Educators.

Teachers earn one of the highest starting salaries of any occupation, and teachers in the Northern Territory have the highest average **starting salary**:



Does this meet your earning expectations?

- Yes, this salary looks good to me
- No, I'd like to earn more

SKILLS AND ATTRIBUTES

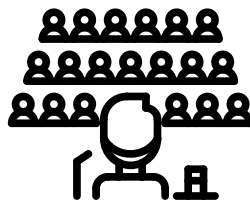
Teachers need to be resilient, resourceful, and positive, and have great oral and written communication skills.

You don't need to have all of these attributes right now, but it would be good if you meet some of them and are willing to work towards the others.



Active indoor work

You'll often be standing, walking and talking throughout your day



Public speaking

Expect to speak in front of groups and to lead people



Positive attitude

Bring out the best in your students

Circle the attributes you feel you have:

Patient	Organised
Confident	Creative
Caring	Good sense of humour
Excellent communicator	High energy
Persistent	Adaptable

How many did you circle?

0 to 3 - you and teaching may not be a good fit

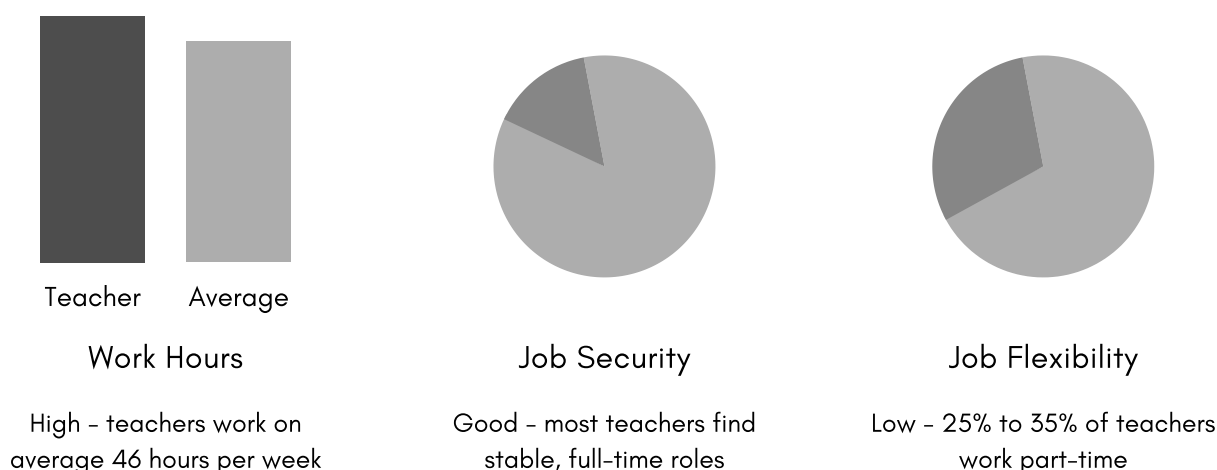
4 to 6 - there could be potential

7 and up - sounds like you could make a great teacher

LIFESTYLE IMPACT - VERY HIGH

Have you thought about what life will be like if/when you become a Teacher? Your career will have an impact on your lifestyle.

Are you willing to change your lifestyle if you need to?



Teachers work during school hours when students are present and use nights and weekends to prepare lessons, mark papers, write exams and reports. School holidays sound amazing but you'll probably have work to do then too, and you may not be able to take extra days outside of those scheduled breaks.

Teachers generally have good job security and can expect to spend longer than average at the one workplace. You could also transfer within your educational system to another school, and potentially progress within your school to roles like Head of Department.

Even with the recent changes to online learning, most teachers will still need to physically come in to school, so you may not be able to find flexibility with your work hours, or work you can do from home.

Do you think you could handle the impact on your lifestyle?

- Yes, it sounds like it would suit me
- No, I'm not so sure this is sounding like me

THOUGHTS SO FAR...

Do you think you could become a teacher? It's an important job, and you'll be part of shaping the lives of young people, which means you'll need to commit to the role. Next we're going to look at pathways to becoming a teacher, but before we go on ask yourself these three questions:

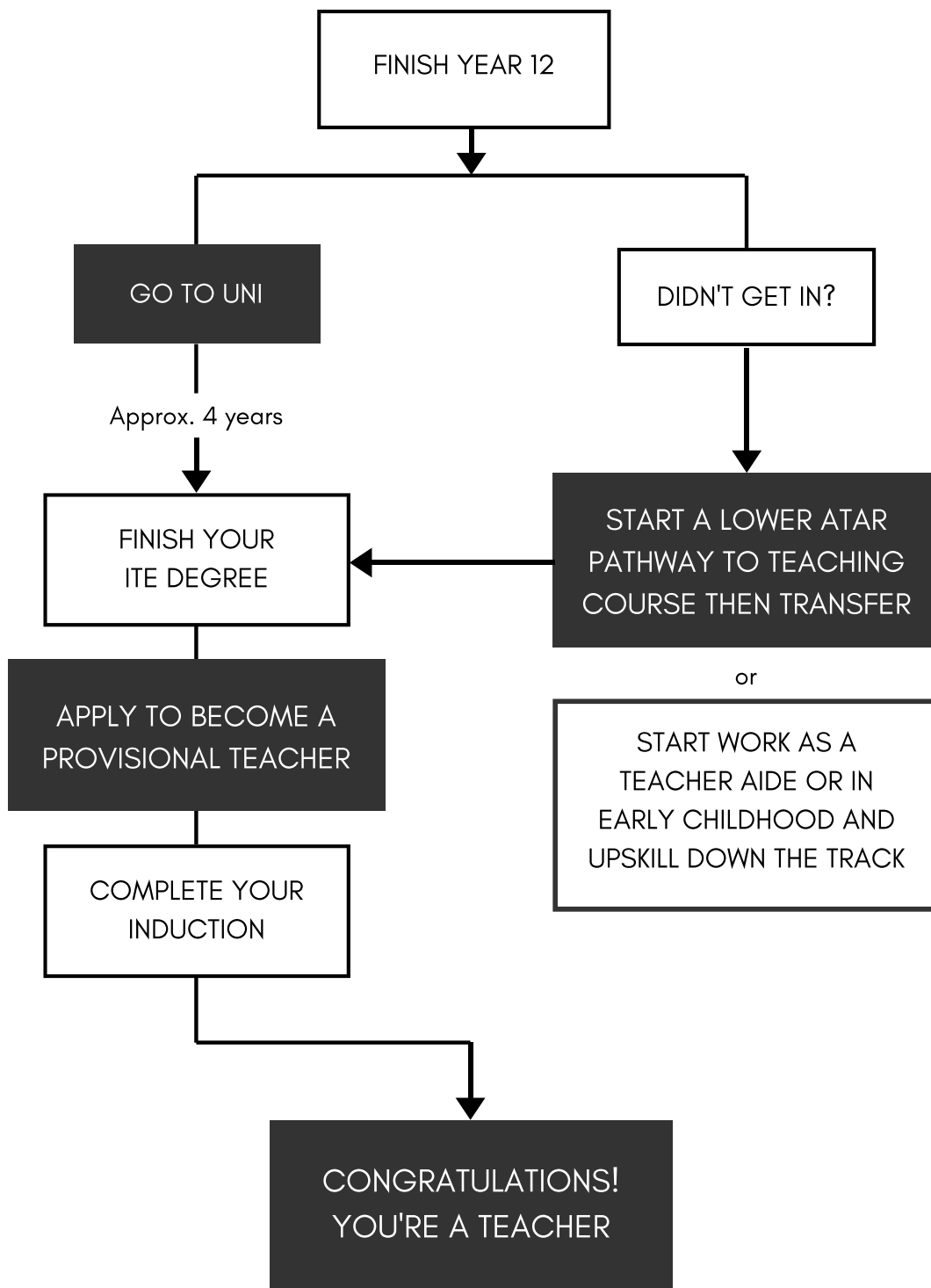
What are you most looking forward to if you become a teacher?

What do you think you will struggle with most as a teacher?

Do you think the lifestyle, pay, and conditions would suit you?

PATHWAYS TO TEACHING

If you think you can handle the salary and working conditions of teaching, and you feel aligned with the skills and attributes required, then take a look at how you could get there.



YOUR STUDY OPTIONS

Once you leave school, you have a few options:

The first and possibly most competitive option is to commence one of the Initial Teacher Education (ITE) Undergraduate Bachelor degrees once you finish School. They could take 4 years to complete.

Double up: possibly consider a double or combined degree. You could graduate with two degrees in 4-5 years, with a broader range of knowledge and skills.

This could make you an attractive candidate for employment, as well as opening up more career options.

The second pathway - complete an undergraduate degree in another field, then meet the requirements and apply for admission to a postgraduate Teaching degree.

You'll need to pass the LANTITE test with ACER (Australian Council for Education Research) and possibly complete other tests or meet some other specified entry requirements. Most programs have strict prerequisites and performance standards.

An added benefit of this pathway is that the range of teaching careers is huge, and you may find something else you prefer along the way. Education Field Officer, Curriculum Designer, or Training and Development professional are just some of the fields you could choose to pursue.

Which pathway are you leaning towards?

- ① If you're thinking about going straight into a teaching degree after school, take a look at the programs offered by the universities listed in this guide and find one that fits your needs
- ② If you're not sure about getting into teaching straight out of school, or if being a teacher is for you, you could find another degree to study, then apply for a post-graduate entry pathway

A DAY IN THE LIFE OF A TEACHING STUDENT



Meet **Ella**.

She's a 4th (final) Year student at Macquarie University, studying a double degree Bachelor of Arts majoring in Education with a Bachelor of Education (Primary).

"Through my degree I've been able to find out exactly what kind of teacher I want to be when I graduate, all with the university's support."

A typical day whilst you're studying for an education degree could be teaching as part of your practical (a highlight of the course for any teaching student), catching up on lectures, spending time networking with and being mentored by colleagues in the staff room, hanging out with friends, or squeezing in some casual work.

Ella says "two days are never the same. I love that each day is totally unpredictable and forces you to go with the flow."

Ella has been able to explore her "passion for inclusive and Indigenous education", which she says "is a dream come true". She has also been able to secure a full-time teaching position for next year.

7-8am

Arrive at school - coffee for me and the teaching supervisor

8am-3pm

Teaching or sitting in on classes, lesson planning and preparation

Breaks and lunch - quick coffee and meal breaks, if you're not preparing for class or helping out on duty with the students

3-8pm

Catch up with friends on campus for a meal and some entertainment

8-9pm

Home to catch up with work (paid and uni)

9-10pm

Time to prepare for the next day and wind down



INITIAL TEACHER EDUCATION

If you've reached this point in the Handbook and think teaching is a good option for you, congratulations.

As you've learnt, teaching requires a unique set of skills, and your ability to lead and empathise with your students will be as important (if not more so) than your academic skills.

For that reason, many of the Initial Teacher Education (ITE) programs have entry requirements which test your people skills and ability to teach.

These ITE programs are accredited by your state or territory Teacher Regulatory Authority. You may know them as a Bachelor of Education or Bachelor of Teaching.

Many of these programs are also available as double degrees.

Many of the ITE programs focus on one of the first three stages; Early Childhood, Primary or Secondary. Some combine two or more stages, or allow you to combine your degree with another program.

Generally these programs take four (4) years to complete.

In addition to academic criteria, you may be asked to provide a **statement** and/or complete a **test** before you can gain entry.

You may also have to attend an interview as part of the application process.

As part of the teaching standards laid out by AITSL you'll also have to complete the **National Literacy and Numeracy Test for Initial Teacher Education Students (LANTITE)**.

Some universities may require you pass this test as part of the application process, most of them however ask you to sit the test (and gain a satisfactory or higher result) once you've started the course, usually before your first work placement.

Is there anything you'd like to learn about the ITE process? Write some notes below and follow up:

YOUR UNIVERSITY DEGREE

In Australia, the teaching degree you complete must be accredited by your State or Territory Teaching Standards Board for you to be eligible to register as a teacher once you finish.

The [Australian Institute for Teaching and School Leadership \(AITSL\)](#), create the framework for the standards in each state, you can check their site for updated information and check for [accredited courses](#).

Australian Professional Standards for Teachers include:

- **Professional Knowledge**

- Know how students learn

- Know the curriculum content and how to teach it

- **Professional Practice**

- Be able to plan and implement effective teaching and learning

- Create and maintain a safe and supportive learning environment

- Assess students, provide feedback, and report on student learning

- **Professional Engagement**

- Engage in professional learning / professional development

- Engage professionally with colleagues, parents, carers and the community

Before you commit to any course you should always double check your eligibility, whether the course is accredited and all the necessary knowledge listed above are covered in the course and your practical placements.

Studying teaching at university can be intense, but many students find it really rewarding. You'll be part of a community of like-minded teaching students and may even feel like you speak your own language at times (as teaching has so many unique terms like 'pedagogy' and 'rubric').

Even if you don't end up working as a teacher, your qualification will be highly regarded by employers in a range of different industries.

COURSE SPOTLIGHT



Wondering what exactly an Initial Teacher Education (ITE) course entails? Let's take a deep dive into a Bachelor of Education (Primary) at James Cook University (JCU).

Career Outcomes

Graduate ready to teach children in Prep - Year 6 in schools across Australia as well as overseas e.g. UK.

Majors

You can specialise in English and literacy, maths and numeracy, science, technology, or HPE

Prerequisites

English (Units 3/4, C), General Maths or Maths Methods or Specialist Maths (Units 3/4, C) and a General Science subject.

Pathways

ATSI TAFE Diploma of Education pathway - apply for direct entry with one year's study credit.

STUDY MODE

Full Time | Part Time

LOCATIONS

Townsville | Cairns
Online

FEES

\$4,850 per year
(est. CSP)

DURATION

4 years full time
5.5 years part time

"At the end of my degree, I hope to teach in a rural community to provide unique learning experiences for my students. I feel prepared heading into the workforce, as I have been lucky enough to undertake professional experience in many different communities."

Shae-Kia Carroll

Studying a Bachelor of Education (Primary)



ITE PROGRAMS FOR NSW

For most of these programs, you'll need a minimum of three Band 5 HSC results, including English. Some also have maths requirements. Some applications also require you to complete a questionnaire or personal statement which you submit as part of your UAC application.

	LEVEL			SR/ATAR	ENTRY	
	Early Childhood	Primary	Secondary		Statement	Interview
Macquarie University	✓	✓	✓	75	✓	✗
University of Sydney	✓	✓	✓	85	✓	✗
UTS	✗	✗	✓	75.5	✓	✗
UNSW	✗	✗	✓	80	✗	✗
Western Sydney Uni	✓	✓	✓	80	✗	✗
UNE	✓	✓	✓	77.10	✓	✗
University of Wollongong	✓	✓	✓	75	✓	✗
University of Newcastle	✓	✓	✓	62	✗	✗
Notre Dame	✓	✓	✓	N/A*	✗	✗
Southern Cross Uni	✓	✓	✓	60	✓	✗
Charles Sturt University	✓	✓	✓	65	✓	✗
ACU	✓	✓	✓	60	✓	✗
Avondale College	✓	✓	✓	63	✓	✗
Alphacrucis College	✗	✓	✓	65	✗	✓

*Applications include non-academic achievements and alt. HSC results

ITE PROGRAMS FOR ACT

For these programs, you'll need English & Maths (T with C minimum pass).

You'll need to complete a non-academic assessment in the form of an online questionnaire which will ask you about your motivations for becoming a teacher, and allow you to explain how you think you meet the inherent qualities required to become a teacher.

	LEVEL			ENTRY		
	Early Childhood	Primary	Secondary	SR/ATAR	Statement	Test
ACU	✓	✓	✓	60	✓	✗
University of Canberra	✓	✓	✓	60	✓	✗

ITE PROGRAMS FOR VIC & UTAS

For most of these programs, you'll need a minimum of VCE 3&4 English and VCE 1&2 Maths General/Methods/Specialist or VCE 3&4 of any maths.

Many Victorian programs require you to sit the CASPer test. UTAS requires you to complete the NACAT Personal Statement.

	LEVEL			ENTRY		
	Early Childhood	Primary	Secondary	SR/ATAR	Statement	Test
ACU	✓	✓	✓	70	✓	✓
Deakin University	✓	✓	✓	70	✗	✓
Eastern College	✓	✓	✓	70	Reference	Interview
Federation University	✓	✓	✓	70	✗	✓
Holmesglen TAFE	✓	✓	✗	70	✗	Interview
La Trobe University	✓	✓	✓	70	✗	✓
Melbourne Polytechnic	✓	✓	✗	70	✓	Interview
Monash University	✓	✓	✓	70	✗	✓
RMIT	✓	✓	✓	70	✗	✓
Swinburne	✓	✓	✓	70	✗	✓
University of Melbourne	✓	✓	✓	85.5*	✗	✓
Victoria University	✗	✓	✓	70	✗	✓
University of Tasmania	✗	✓	✓	65	✓	✗

ITE PROGRAMS FOR QLD

For most of these programs, you'll need a minimum of English (Units 3&4, C) General/Specialist Mathematics or Mathematical Methods (Units 3&4, C), and a General Science Subject (Units 3&4, C).

If you need to apply through QTAC you'll need to complete the Non-Academic Entry Requirements including two written statements and an online questionnaire. You only need to complete this once for all QTAC courses.

	LEVEL			ENTRY		
	Early Childhood	Primary	Secondary	SR/ATAR	Statement	Test
ACU	✓	✓	✓	60	✓	✓
CQUniversity	✓	✓	✓	62	✓	✗
Christian Heritage	✗	✓	✓	68	✓	✗
Griffith University	✓	✓	✓	70	✓	✗
James Cook University	✓	✓	✓	73.3	✓	✗
QUT	✓	✓	✓	72	✓	✓
Southern Cross Uni	✓	✓	✓	60	✓	✗
University of Qld	✗	✓	✓	76	✓	✗
USQ	✓	✓	✓	68	✓	✗
USC	✓	✓	✓	68	✓	✗

ITE PROGRAMS FOR SA & NT

You'll need to complete a non-academic assessment known as a Teaching Capabilities Statement as part of your application through SATAC. This is a 400-600 word written response that covers what you think it means to be a teacher and why you want to become one.

You can also refer to your achievements and involvement in community programs or volunteering which could support your application. Make sure you provide evidence to back up your statements, and take your time, because once you submit your Statement you can't change it.

	LEVEL			ENTRY		
	Early Childhood	Primary	Secondary	SR/ATAR	Statement	Test
CQUniversity	✓	✓	✓	62	✓	✗
Flinders University	✓	✓	✓	70	✓	✗
Tabor	✗	✓	✓	70	✓	✗
University of Adelaide	✗	✗	✓	70.1	✓	✗
University of SA	✓	✓	✓	69.8	✓	✗
Charles Darwin Uni	✓	✓	✓	60	✓	✗

ITE PROGRAMS FOR WA

For most of these programs, you'll need a minimum of English/Literature/EALD ATAR and Mathematics Applications ATAR, and a Science ATAR course is desirable.

You'll need to complete a non-academic assessment in the form of an online questionnaire which will ask you about your motivations for becoming a teacher, and allow you to explain how you think you meet the inherent qualities required to become a teacher.

	LEVEL			ENTRY		
	Early Childhood	Primary	Secondary	SR/ATAR	Statement	Test
Curtin University	✓	✓	✓	70	✓	✗
ECU	✓	✓	✓	70	✓	✗
Murdoch University	✓	✓	✓	70	✓	✗
Notre Dame	✓	✓	✓	70	✓	✗
UWA*	✓	✓	✓	80	✗	✗

*Study an undergraduate 3yr degree followed by a 2yr masters degree. Choose from a Graduate Pathway (ATAR 75+) or complete any undergraduate degree (ATAR per degree) with WAM of 60% for guaranteed entry to Master of Teaching. You'll also need to complete a personal statement to gain admission to the MTeach.

UNDERSTANDING REGISTRATION

Once you've completed an accredited ITE or postgraduate program, you'll have learnt all the necessary skills and knowledge that you'll need to teach to the approved Australian standard. You'll even have completed practical workplace experience and hopefully feel ready to take the leap into a classroom of your own.

Reaching this point may have been challenging and will have taken you a minimum of 4 years to achieve. If you're still determined to take your passion to teach to the next level, you'll need to register in the state or territory where you'll be working.

Registration is important to ensure that a high standard of preparation, conduct and practice is upheld in the profession. It's important to ensure standards of teaching are being met and in the best interests and welfare of students.

Registration is granted and managed by teacher regulatory authorities in each state and territory. You can usually apply while you're in your final semester of your degree.

As a new graduate you'll likely be granted a **provisional registration**. Once you've reached the required amount of teaching days and can show evidence of your proficiency, you can apply for **full registration**. Your evidence will be assessed before your registration is granted and you'll also need a recommendation from the principal (or equivalent) where you are teaching.

As part of your registration (provisional or full) you may be required to obtain:

- Proof of your qualification and LANTITE results
- References
- A national criminal history records check
- Relevant working with children certificate in your state

Once you've reached the milestone of becoming a registered teacher, you should celebrate.

You should also know that's not the end of the story. You'll also need to apply to renew your registration if you want to keep teaching.

The maximum time your registration can last for is 5 years, but in some states you may have to renew it more frequently.

Each time you apply for renewal you may have to show an updated criminal check, that you've maintained your knowledge and practice of teaching standards, and that you've completed the required amount of continued professional development (CPD).

Employers may have additional requirements such as:

- First Aid Certificate
- Anaphylaxis Training

UNDERSTANDING REGISTRATION

State	Registering Authority	ITE Qualification	Days Teaching	Working With Children	Police Check	Mandatory Notification Training (MNT)	Fees
ACT	<u>TEACHER QUALITY INSTITUTE</u>	✓	180	✓	✗	✗	✓
NSW	<u>NSW EDUCATION STANDARDS AUTHORITY</u>	✓	160	✓	✗	✗	✓
NT	<u>TEACHER REGISTRATION BOARD</u>	✓	180	✓	✓	✗	✓
QLD	<u>QUEENSLAND COLLEGE OF TEACHERS</u>	✓	200	✓	✓	✗	✓
SA	<u>TEACHERS REGISTRATION BOARD</u>	✓	200	✓	✓	✓	✓
TAS	<u>TEACHERS REGISTRATION BOARD</u>	✓	185	✓	✓	✗	✓
VIC	<u>VICTORIAN INSTITUTE OF TEACHING</u>	✓	80	✓	✓	✗	✓
WA	<u>TEACHER REGISTRATION BOARD</u>	✓	100	✓	✓	✗	✓

*Guidelines for applying for full registration – check with employers they may have additional requirements

CREATING A PLAN B

Teaching is a big commitment, so if you're on the fence about becoming a teacher, then it's probably worth researching some other options and creating a 'Plan B'.

Luckily, many Graduate Teaching Programs (i.e. ones you can only get into once you already have a degree) don't put limits on the type of degree you can have. Which means that you could apply with a Bachelor of Arts, Engineering, Accounting, or IT.

It could be wise for your Plan B to include career options other than 'teacher', in case you don't get into an accredited teaching course, or you change your mind during your uni studies.

Your Plan B could also include options for courses or pathways you'll take if you don't get an offer for your first preference.

You can still achieve your goal of a career in teaching if you miss out in the first round of offers, so don't give up.

Research alternative pathways with each uni, and look around at all the degrees on offer. They'll have different eligibility criteria, e.g. often lower ATAR requirements.

You could apply for any other undergraduate degree in an area that interests you, then apply for a postgraduate teaching program once you've graduated.

If you're not sure about uni, how about a vocational qualification or a traineeship - it will provide you with the foundation knowledge, plus hands-on experience in school and classroom settings, which could help you to decide if teaching is the right career for you.

Some universities will even take into account your vocational qualifications, work and life experience when you apply for teaching programs with them. So it's often not all about getting a top ATAR result.



STUDY WORK GROW

Teachers are amazing people, and if you're on the path to becoming a teacher then we celebrate your decision.

We've created this Handbook to help make the process a little bit easier, but we are all unique and your circumstances may be different, so we recommend doing your own research before starting your application.

It's also a great idea to speak with teachers about their pathways and experiences while studying, as well as what they think about teaching as a career. Obtaining work experience in schools is another great way to find out if teaching is for you; adding valuable experience to your resume and uni applications.

From time-to-time, institutions change their policies, application procedures, and deadlines; so please double-check all entry dates, fees and requirements directly with the institution(s) you're going to apply for.

We wish all students the best of luck with their applications, and for an exciting and fulfilling career.

