

## Travelling on a replacement bus

### Accessibility

Most train replacement buses will be low-floor models to assist passengers.

If you need help or cannot board a replacement bus, please contact PTV prior to travelling on **1800 800 007** or speak to our staff at the bus stop for alternative transport to be arranged at no cost.

### Bikes and pets

Bicycles, dogs (with the exception of animals identified by an Assistance Animal Pass) and surfboards are not allowed on train replacement buses.

### Ticketing

Where possible, you should touch on and off at the beginning and end of your journey. When catching train replacement buses, you can touch on and off at your connecting train station.

For more information visit [ptv.vic.gov.au](http://ptv.vic.gov.au) or call **1800 800 007**.

If you're deaf, or have a hearing or speech impairment, contact us through the National Relay Service – for more information, visit [relayservice.gov.au](http://relayservice.gov.au)



For information in other languages:

普通話	9321 5454	廣東話	9321 5441
Italiano	9321 5444	ਪੰਜਾਬੀ	9321 5445
Ελληνικά	9321 5443	हिन्दी	9321 5442
Việt-ngữ	9321 5449	தமிழ்	9321 5446
عربي	9321 5440	Español	9321 5447

If your language isn't listed visit [ptv.vic.gov.au/languages](http://ptv.vic.gov.au/languages) or call **9321 5450**.



# Buses replace trains on the Frankston Line

8.30pm Wednesday 24 August to Saturday 27 August



Artist's impression. Subject to change.

SPA7982



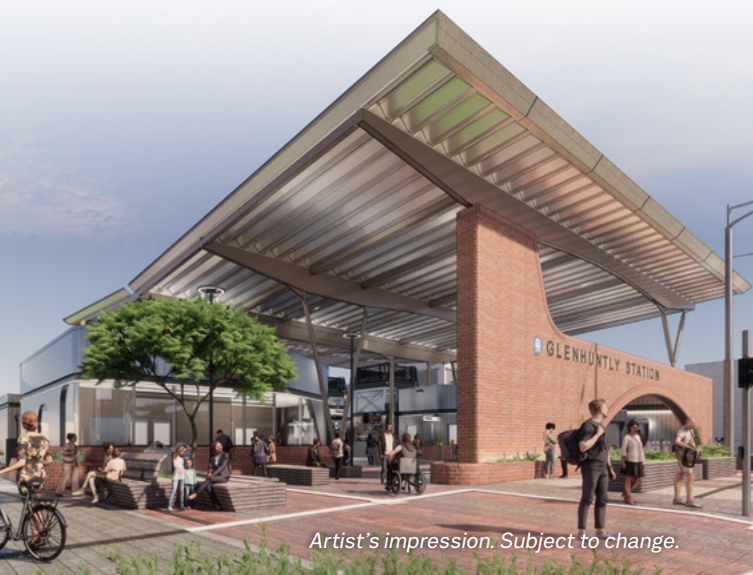
# We're busy removing level crossings

As part of Victoria's Big Build, we're removing 20 dangerous level crossings and building 13 new stations as part of a more than \$4 billion upgrade on the Frankston Line. It will improve safety, reduce congestion and allow more trains, more often.

The Glen Huntly Level Crossing Removal Project will remove two level crossings at Glen Huntly Road and Neerim Road by lowering the train line into a trench, as well as build a new Glenhuntly Station.

The new station will feature lowered platforms that improve safety and accessibility for locals. It will also provide better connections between public transport, shops and community spaces.

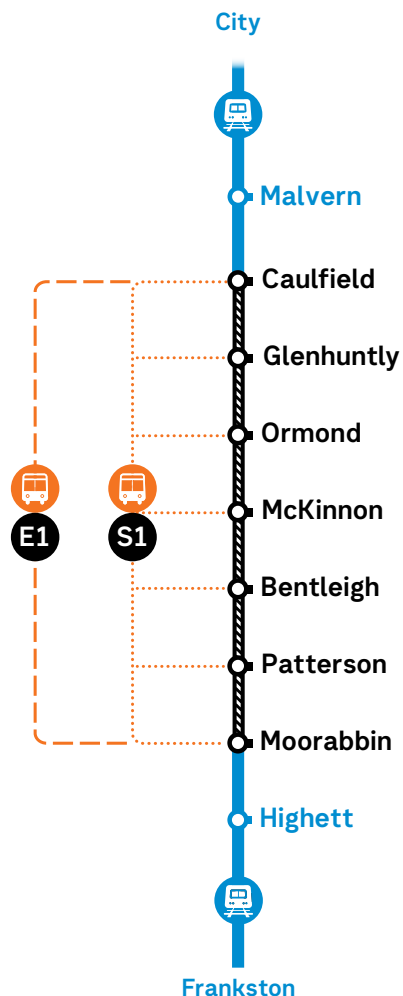
These two dangerous and congested level crossings have been fast-tracked for removal, with early construction works underway to remove the boom gates by 2023 and finish the job in 2024 – one year ahead of schedule.



## Buses replace trains

### Between Caulfield and Moorabbin

8.30 pm Wednesday 24 August to  
4am Saturday 27 August



### Train replacement bus services

**S1** Stopping all stations

**E1** Express



## Night works between Richmond and Caulfield

7.30pm to last service, Sunday 14 August.

During this time passengers are advised to take a Belgrave, Lilydale or Glen Waverley line train from Flinders Street to Richmond and transfer to a replacement bus.

## Route 67 tram services

During these works, Route 67 trams continue to run their normal route between the city and Glen Huntly.

Trams may be busier than normal due to train replacement buses travelling in the area.

## Planning your journey

We're here to help you travel during major construction and get you to and from your destination as quickly and easily as possible. We'll continue to keep you updated on works and advise you of the best way to travel.

Plan your journey at [ptv.vic.gov.au](http://ptv.vic.gov.au) or call 1800 800 007.



For more details on Frankston Line changes

Visit [ptv.vic.gov.au/frankstondisruptions](http://ptv.vic.gov.au/frankstondisruptions) or use your phone's camera or QR reader to scan the code