



McAuley

*By McAuley House Leaders:
Kye, Xavier, Ella, Lochie w and Anneke.*



Welcome - Led by Anneke

Welcome to McAuley's House Team.

Your leaders for this year are:

Xavier, Kye, Lochie W , Ella and myself, Anneke.

Today we will be talking about how our house team got its name and who Catherine McAuley is.

Catherine McAuley

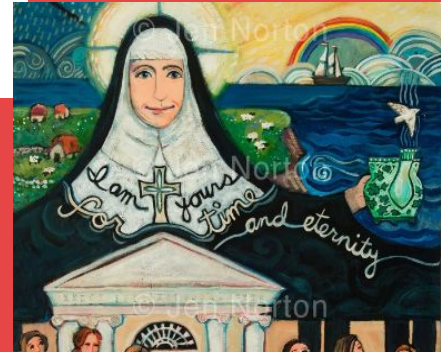


McAULEY is the RED
House Team

Our house team
name is named
after Catherine
McAuley

Let's Watch :

Catherine McAuley
video - who was she?



Early years - Helping - led by Kye

Although Catherine McAuley was an Irish orphan, her foster family was very wealthy. After her foster parents had passed away, they left Catherine a large inheritance of money. The first thing she did with the money was to open a House of Mercy for homeless boys and girls to live in and learn in. Soon many young girls wanted to help Catherine at the shelter and they started an order of nuns called the Sisters of Mercy. Soon after, this order of nuns grew in number and spread across England and even to Australia.



Who is Catherine McAuley? Led by Xavier

Catherine McAuley was the founder of the Sisters of Mercy. She wanted to help the poor by helping them to be educated. Catherine McAuley was an Irish religious sister known as a nun, who founded the Sisters of Mercy in 1831.

Catherine McAuley is known for dedicating her life to caring for the poor, particularly women and children. Catherine opened the House of Mercy in 1827. It was a facility built to house and educate poor women.



“Proof of Love is Deed” Led by Ella

Catherine McAuley’s favourite saying was

“Proof of Love is Deed”

- it means that....

if you want to show someone that you love them, do this with your actions.



Catherine McAuley Led by Lochie W

Our St Joseph's School in Sorrento, opened in 1932, in the care of the Sisters of Mercy, the group of nuns first started by Catherine McAuley in Dublin, Ireland.

They were the first teachers at our school.



Archbishop Mannix - Led by Xavier

Archbishop Mannix performed a ceremony at the opening of the school on Sunday 24th January, 1932. Here are the first St Joseph's students standing in front of Daniel Mannix' car.



The Archbishop's car. Prior Clem O.C.C. as the school.

St Joseph's School - led by Anneke

- St Joseph's School, Sorrento, opened 28th of January in 1932
- It had one single classroom and had more rooms added in 1957, 1966, 1978 1998+
- The Sisters of Mercy last taught St Joseph's School in 1983.
- The Sisters of Mercy also were very kind by helping the poor in the early years.
- They were an Irish order of nuns founded by Catherine McAuley in 1851.
- These nuns engaged in education and social service at our school and in the area.

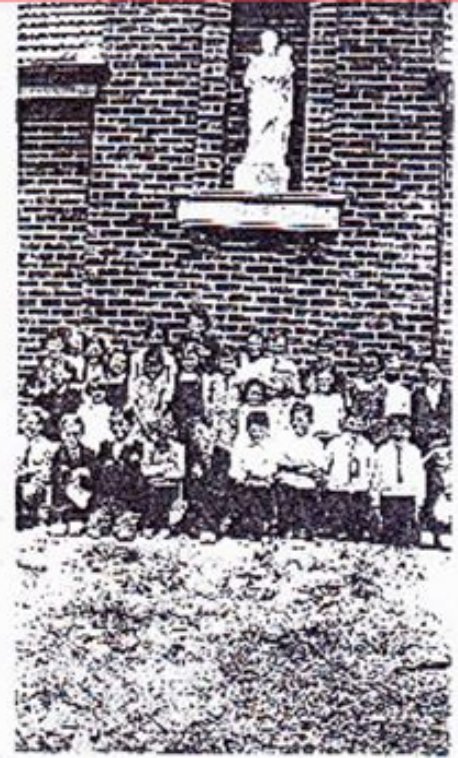
For example- teaching (especially the poor), caring for the sick, aged and orphans.

- This school was operated by Sisters of Mercy from 1932 until December 1983.

The Opening of St Joseph's - Led by Ella

St Joseph's School, Sorrento, has served the needs of the Southern Peninsula since 1932. In the early days the amount of people going to the school was less than 50, with a staff of two nuns.

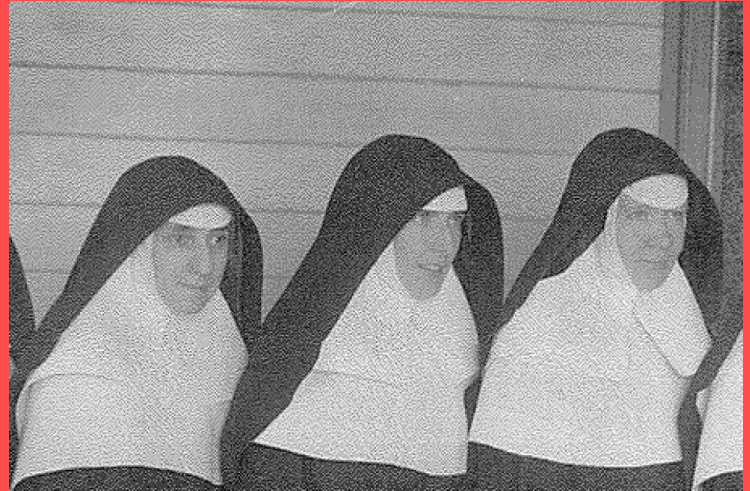
Principals and teachers have been leading the school from 1984 onwards, after 51 years of the school being served by the Sisters of Mercy.



*The first day at St. Joseph's.
Monday 25th Jan. 1932.*

Sisters of Mercy - Led by Lochie W

The Sisters of Mercy opened a convent and ran St Joseph's School from 1931. They ran our School from 1931 until December 1983. Catherine McAuley was the founder of the Sisters of Mercy.



“We should be like shining lamps, giving light to all around us”

Catherine McAuley

TASK:
Making Lanterns
to remind us to
shine our light

Watch how to
make them [HERE](#)

Don't forget to paste [Xavier's sketch and special quote of Catherine McAuley](#) to the TOP and BOTTOM of your lantern

What you need: Colored sheet – A4 size, Scissors and a Stapler

How to make it : Cut a strip off the A4 sheet to make the handle. Now fold the paper into half lengthwise. Paste [Xavier's sketch and special quote of Catherine McAuley](#) to the TOP and BOTTOM of your piece of paper. Now make equal cuts into the paper about 3/4th of the width. Open the sheet, now make a roll to attach the wide ends of paper to make the lantern. Finally attach the handles.



Goodbye Everyone!!

Hope you enjoyed
this!!!!