

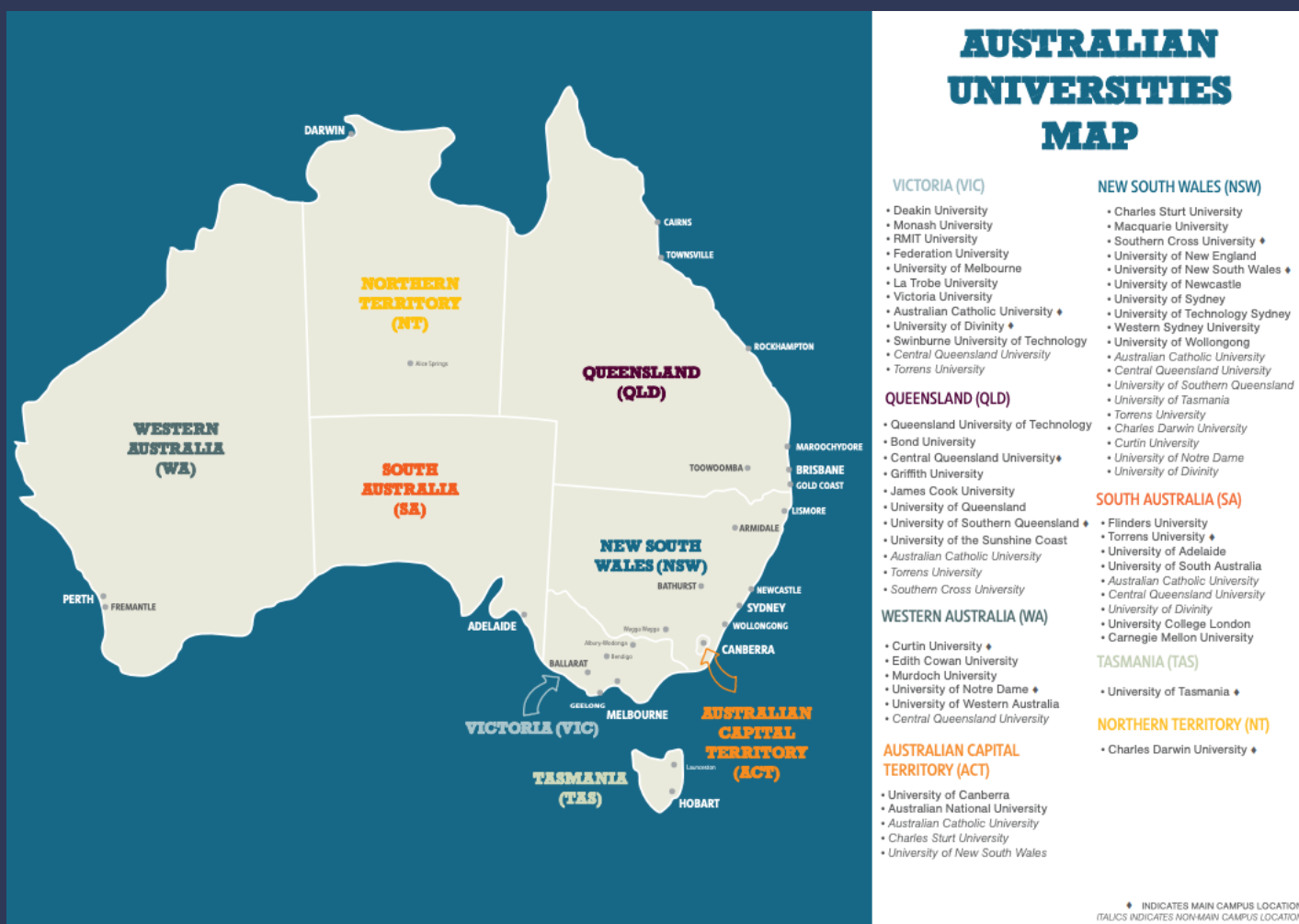


Blackburn HIGH SCHOOL

# Entry Schemes and Alternate Pathways Directory 2023

# Australian Universities

The Australian universities location map shows university campuses across major Australian locations. Most universities have more than one campus and are located across multiple states and territories, providing you with a choice of where in Australia you would like to study. For the purposes of this resource, where there are institutions with interstate campuses, you will find its related information under the state of the home/original campus. Please refer to university websites to further explore course and campus options.



Source: <https://www.studyaustralia.gov.au/english/study/universities-higher-education/list-of-australian-universities>

## DISCLAIMER

This resource contains details for a selection of institutions registered with Universities Australia as the peak body of the higher education sector in Australia.

Universities may, at any point, make changes to schemes or dates, and many institutions have course specific entry requirements or prerequisites as conditions so be sure to check individual websites. Please check citizenship eligibility as this varies between schemes.

This is not an exhaustive list of entry schemes and alternate pathways. Refer to institution website for further details.

Published April 2022 © Career Tools

# Contents

## Australian Capital Territory

---

Australian National University  
University of Canberra

## New South Wales

---

Australian Catholic University  
Charles Sturt University  
Macquarie University  
Southern Cross University  
University of New England  
University of Newcastle  
University of New South Wales  
University of Sydney  
University of Technology Sydney  
University of Wollongong  
Western Sydney University

## Northern Territory

---

Charles Darwin University

## Queensland

---

Bond University  
Central Queensland University  
Griffith University  
James Cook University  
Queensland University of Technology  
University of Queensland  
University of Southern Queensland  
University of Sunshine Coast

## South Australia

---

Flinders University  
Torrens University  
University of Adelaide  
University of South Australia

## Tasmania

---

University of Tasmania

## Victoria

---

Deakin University  
Federation University  
La Trobe University  
Monash University  
Royal Melbourne Institute of Tech  
Swinburne University of Technology  
University of Melbourne  
Victoria University

## Western Australia

---

Curtin University  
Edith Cowan University  
Murdoch University  
University of Notre Dame  
University of Western Australia



## Direct Entry Scheme

<b>Eligibility</b>	Year 12 students nationwide
<b>ATAR</b>	Required
<b>UAC Application</b>	Not required
<b>Course Exclusions</b>	Nil
<b>Opening date</b>	2 March 2022
<b>Closing date</b>	23 May 2022
<b>Assessment Criteria/Supporting Documentation</b>	<ul style="list-style-type: none"><li>• Year 11 results</li><li>• The co-curricular or service requirement</li><li>• Any additional program requirements, prerequisites or portfolios</li></ul>
<b>Hints</b>	<ul style="list-style-type: none"><li>• Use the <a href="#">CCS calculator</a> to find out if you meet the skills threshold to apply under this scheme</li><li>• Applying directly for admission in this round means you will also be considered for scholarships and campus accommodation</li><li>• Indigenous students should complete the <a href="#">declaration form here</a></li></ul>
<b>Apply/More Info</b>	<a href="https://www.anu.edu.au/study/apply/domestic-applications-anu-undergraduate">https://www.anu.edu.au/study/apply/domestic-applications-anu-undergraduate</a>
<b>Other Entry Schemes and Alternate Pathways</b>	<ul style="list-style-type: none"><li>• <a href="#">Special Consideration</a></li><li>• <a href="#">National Access Scheme</a></li><li>• <a href="#">Elite Athlete Scheme</a></li></ul>



## Schools Recommendation Scheme

<b>Eligibility</b>	Year 12 applicants nationwide who have completed SRS in UAC
<b>ATAR</b>	Not required
<b>UAC Application</b>	Required
<b>Course Exclusions</b>	Yes- <a href="#">please check website</a>
<b>Opening date</b>	12 April 2022
<b>Closing date</b>	19 September 2022
<b>Assessment Criteria/Supporting Documentation</b>	<ul style="list-style-type: none"><li>• UC assesses the aptitude section of the school ratings</li></ul>
<b>Hints</b>	<ul style="list-style-type: none"><li>• UAC requires payment for undergraduate admission before you can start your SRS application</li><li>• <a href="#">Follow instructions here</a></li></ul>
<b>Apply/More Info</b>	<a href="https://www.uac.edu.au/current-applicants/schools-recommendation-schemes">https://www.uac.edu.au/current-applicants/schools-recommendation-schemes</a>
<b>Other Entry Schemes and Alternate Pathways</b>	<ul style="list-style-type: none"><li>• <a href="#">Subject adjustment factors</a></li><li>• <a href="#">UC Connect</a></li><li>• <a href="#">Aboriginal and Torres Strait Islander Foundation Scheme</a></li><li>• <a href="#">Portfolio entry</a></li></ul>



## Schools Recommendation Scheme

<b>Eligibility</b>	Year 12 applicants nationwide who have completed SRS in UAC
<b>ATAR</b>	Required- conditional offers may be made based on achieving a minimum selection rank
<b>UAC Application</b>	Required
<b>Course Exclusions</b>	Nil
<b>Opening date</b>	12 April 2022
<b>Closing date</b>	19 September 2022
<b>Assessment Criteria/Supporting Documentation</b>	<ul style="list-style-type: none"><li>• Year 11 studies</li><li>• School ratings</li></ul>
<b>Hints</b>	<ul style="list-style-type: none"><li>• UAC requires payment for undergraduate admission before you can start your SRS application</li><li>• <a href="#">Follow instructions here</a></li></ul>
<b>Apply/More Info</b>	<a href="https://www.uac.edu.au/current-applicants/schools-recommendation-schemes">https://www.uac.edu.au/current-applicants/schools-recommendation-schemes</a>
<b>Other Entry Schemes and Alternate Pathways</b>	<ul style="list-style-type: none"><li>• <a href="#">ACU Guarantee (see next page)</a></li><li>• <a href="#">Aboriginal and Torres Strait Islander entry program</a></li><li>• <a href="#">Foundation Studies</a></li><li>• Special access schemes through QTAC, UAC or VTAC</li></ul>



## ACU Guarantee

## Direct Entry Scheme

<b>Eligibility</b>	Year 12 students nationwide who also completed year 11 in Australia
<b>ATAR</b>	Required
<b>UAC Application</b>	Not required
<b>Course Exclusions</b>	Yes- <a href="#">please check website</a>
<b>Opening date</b>	18 July 2022
<b>Closing date</b>	Check website updates for deadline
<b>Assessment Criteria/Supporting Documentation</b>	<ul style="list-style-type: none"><li>• Year 11 results</li><li>• Completion of senior secondary certificate</li><li>• Personal statement</li></ul>
<b>Hints</b>	<ul style="list-style-type: none"><li>• Although the personal statement is optional, it is highly recommended to enhance your chances of an early offer</li><li>• Check if your results need to be uploaded</li><li>• You can submit two course preferences</li></ul>
<b>Apply/More Info</b>	<a href="https://www.acu.edu.au/study-at-acu/admission-pathways/acu-guarantee">https://www.acu.edu.au/study-at-acu/admission-pathways/acu-guarantee</a>





## Schools Recommendation Scheme

<b>Eligibility</b>	Year 12 applicants nationwide who have completed SRS in UAC
<b>ATAR</b>	May be required- some conditional offers may be made based on achieving a minimum selection rank
<b>UAC Application</b>	Required
<b>Course Exclusions</b>	Yes: <ul style="list-style-type: none"><li>• B Dental Science</li><li>• B Veterinary Biology/B Veterinary Science</li><li>• B Technology/M Engineering (Civil Systems)</li><li>• Dip General Studies</li><li>• Doctor of Medicine (Joint Program)</li></ul>
<b>Opening date</b>	12 April 2022
<b>Closing date</b>	19 September 2022
<b>Assessment Criteria/Supporting Documentation</b>	<ul style="list-style-type: none"><li>• Year 11 studies</li><li>• School ratings</li></ul>
<b>Hints</b>	<ul style="list-style-type: none"><li>• UAC requires payment for undergraduate admission before you can start your SRS application</li><li>• <a href="#">Follow instructions here</a></li></ul>
<b>Apply/More Info</b>	<a href="https://www.uac.edu.au/current-applicants/schools-recommendation-schemes">https://www.uac.edu.au/current-applicants/schools-recommendation-schemes</a>
<b>Other Entry Schemes and Alternate Pathways</b>	<ul style="list-style-type: none"><li>• <a href="#">Charles Sturt Advantage (see next page)</a></li><li>• <a href="#">Connections (First Nations Direct Entry Program)</a></li><li>• <a href="#">Charles Sturt University Pathway</a></li><li>• <a href="#">Access schemes/Elite athlete and performer</a></li></ul>





## Charles Sturt Advantage

## Direct Entry Scheme

<b>Eligibility</b>	Year 12 students nationwide
<b>ATAR</b>	Not required
<b>UAC Application</b>	Not required
<b>Course Exclusions</b>	Yes- <a href="#">please check website</a>
<b>Opening date</b>	1 February 2022
<b>Closing date</b>	Rnd 1- 31 March 2022 Rnd 2- 24 June 2022 Rnd 3- 31 August 2022
<b>Assessment Criteria/Supporting Documentation</b>	<ul style="list-style-type: none"><li>• Year 11 results</li><li>• You will be asked to respond to three questions demonstrating your soft skills</li></ul>
<b>Hints</b>	<ul style="list-style-type: none"><li>• <a href="#">Read up on soft skills</a></li><li>• Students in NSW must upload a copy of their Year 11 results from their NESA Students Online account. All other states and territories must upload a copy of their final Year 11 school report</li></ul>
<b>Apply/More Info</b>	<a href="https://study.csu.edu.au/study-options/pathways/charles-sturt-advantage">https://study.csu.edu.au/study-options/pathways/charles-sturt-advantage</a>





## Schools Recommendation Scheme

<b>Eligibility</b>	Year 12 applicants nationwide who have completed SRS in UAC
<b>ATAR</b>	Not required
<b>UAC Application</b>	Required
<b>Course Exclusions</b>	Yes- <a href="#">please check website</a>
<b>Opening date</b>	12 April 2022
<b>Closing date</b>	19 September 2022
<b>Assessment Criteria/Supporting Documentation</b>	<ul style="list-style-type: none"><li>• Year 11 studies</li><li>• School ratings</li></ul>
<b>Hints</b>	<ul style="list-style-type: none"><li>• UAC requires payment for undergraduate admission before you can start your SRS application</li><li>• <a href="#">Follow instructions here</a></li></ul>
<b>Apply/More Info</b>	<a href="https://www.uac.edu.au/current-applicants/schools-recommendation-schemes">https://www.uac.edu.au/current-applicants/schools-recommendation-schemes</a>
<b>Other Entry Schemes and Alternate Pathways</b>	<ul style="list-style-type: none"><li>• <a href="#">Leaders and Achievers (see next page)</a></li><li>• <a href="#">Aboriginal and Torres Strait Islander Entry Pathway (ATSIEP)</a></li><li>• <a href="#">Pathways programs (undergraduate certificate, diplomas and foundation programs)</a></li></ul>



## Leaders and Achievers

## Direct Entry Scheme

<b>Eligibility</b>	NSW HSC, ACT SSC or IB students who performed well academically in Year 11
<b>ATAR</b>	Not required
<b>UAC Application</b>	Not required
<b>Course Exclusions</b>	Yes- <a href="#">please check the website</a>
<b>Opening date</b>	1 June 2022
<b>Closing date</b>	Check website updates for deadline
<b>Assessment Criteria/Supporting Documentation</b>	<ul style="list-style-type: none"><li>• Meet leadership requirements by exemplifying two extra-curricular activities undertaken in Year 11 and/or 12</li><li>• You will be required to provide an overall reflection with a maximum 1000 character count</li></ul>
<b>Hints</b>	<ul style="list-style-type: none"><li>• You can include up to five course preferences in your application</li><li>• You will need to include a school referee and a referee for each of the activities you include</li><li>• There are 20x \$10,000 scholarships that will be awarded via this scheme to competitive applicants</li></ul>
<b>Apply/More Info</b>	<a href="https://www.mq.edu.au/study/admissions/entry-requirements/domestic/macquarie-entry/macquarie-leaders-and-achievers/how-to-apply">https://www.mq.edu.au/study/admissions/entry-requirements/domestic/macquarie-entry/macquarie-leaders-and-achievers/how-to-apply</a>

## Schools Recommendation Scheme

SHOWCASE YOUR POTENTIAL





## Early Offer

## Direct Entry Scheme

<b>Eligibility</b>	Year 12 students nationwide
<b>ATAR</b>	Not required
<b>UAC Application</b>	Not required
<b>Course Exclusions</b>	There are slight changes this year so please check the website
<b>Opening date</b>	May 2022
<b>Closing date</b>	Check website updates for deadline
<b>Assessment Criteria/Supporting Documentation</b>	<ul style="list-style-type: none"><li>• Principal's recommendation</li><li>• High school grades</li></ul>
<b>Hints</b>	<ul style="list-style-type: none"><li>• Not all courses are across every campus so be sure to check the website first!</li><li>• You can select 1 preference only</li></ul>
<b>Apply/More Info</b>	<a href="https://www.scu.edu.au/early-offer/">https://www.scu.edu.au/early-offer/</a>
<b>Other Entry Schemes and Alternate Pathways</b>	<ul style="list-style-type: none"><li>• <a href="#">Preparing for Success Program</a></li><li>• <a href="#">Transition to Uni</a></li><li>• <a href="#">Special admission schemes</a></li></ul>



## Schools Recommendation Scheme

<b>Eligibility</b>	Year 12 applicants nationwide who have completed SRS in UAC
<b>ATAR</b>	Not required
<b>UAC Application</b>	Required
<b>Course Exclusions</b>	Yes- please check website
<b>Opening date</b>	12 April 2022
<b>Closing date</b>	19 September 2022
<b>Assessment Criteria/Supporting Documentation</b>	<ul style="list-style-type: none"><li>• Year 11 studies</li><li>• School ratings</li></ul>
<b>Hints</b>	<ul style="list-style-type: none"><li>• UAC requires payment for undergraduate admission before you can start your SRS application</li><li>• <a href="#">Follow instructions here</a></li></ul>
<b>Apply/More Info</b>	<a href="https://www.uac.edu.au/current-applicants/schools-recommendation-schemes">https://www.uac.edu.au/current-applicants/schools-recommendation-schemes</a>
<b>Other Entry Schemes and Alternate Pathways</b>	<ul style="list-style-type: none"><li>• <a href="#">UNE Direct (see next page)</a></li><li>• <a href="#">Pathways Enabling Course</a></li><li>• <a href="#">Internal Selection Program (Aboriginal and Torres Strait Islander pathway)</a></li></ul>



## UNE Direct

## Direct Entry Scheme

<b>Eligibility</b>	Year 12 students nationwide
<b>ATAR</b>	Not required
<b>UAC Application</b>	Not required
<b>Course Exclusions</b>	Yes- <a href="#">please check the early entry course list</a>
<b>Opening date</b>	7th February 2022
<b>Closing date</b>	23rd September 2022
<b>Assessment Criteria/Supporting Documentation</b>	<ul style="list-style-type: none"><li>• Principal's recommendation</li><li>• Ability to seek consideration as educationally disadvantaged, e.g. ongoing personal illness. Must upload evidence.</li></ul>
<b>Hints</b>	<ul style="list-style-type: none"><li>• You can select up to 3 preferences</li></ul>
<b>Apply/More Info</b>	<a href="https://www.une.edu.au/study/study-on-campus/early-entry">https://www.une.edu.au/study/study-on-campus/early-entry</a>

**UNE'S**  
**Direct Early Entry**

OPEN NOW:  
[WWW.UNE.EDU.AU/EARLYENTRY](http://WWW.UNE.EDU.AU/EARLYENTRY)

**NO ATAR REQUIRED**  
**ON CAMPUS AND ONLINE STUDY OPTIONS**  
**EARLY ENTRY IS FREE TO APPLY**  
**APPLICATIONS OPEN NOW**



## Schools Recommendation Scheme

<b>Eligibility</b>	Year 12 applicants nationwide who have completed SRS in UAC
<b>ATAR</b>	May be required- some conditional offers may be made based on achieving a minimum selection rank
<b>UAC Application</b>	Required
<b>Course Exclusions</b>	Yes- <a href="#">please check website</a>
<b>Opening date</b>	12 April 2022
<b>Closing date</b>	19 September 2022
<b>Assessment Criteria/Supporting Documentation</b>	<ul style="list-style-type: none"><li>• Year 11 studies</li><li>• School ratings</li></ul>
<b>Hints</b>	<ul style="list-style-type: none"><li>• UAC requires payment for undergraduate admission before you can start your SRS application</li><li>• <a href="#">Follow instructions here</a></li></ul>
<b>Apply/More Info</b>	<a href="https://www.uac.edu.au/current-applicants/schools-recommendation-schemes">https://www.uac.edu.au/current-applicants/schools-recommendation-schemes</a>
<b>Other Entry Schemes and Alternate Pathways</b>	<ul style="list-style-type: none"><li>• <a href="#">Subject Spotlight</a></li><li>• <a href="#">Open Foundation</a></li><li>• <a href="#">Yapug (Aboriginal and Torres Strait Islander entry)</a></li><li>• <a href="#">Elite Athlete Program</a></li><li>• Law Early Entry Schemes (<a href="#">Aboriginal</a> and <a href="#">Refugee</a>)</li></ul>



## Gateway

## Schools Recommendation Scheme

<b>Eligibility</b>	NSW Year 12 students attending a Gateway school or qualify under UAC EAS SEIFA. <a href="#">Check the gateway schools here</a>
<b>ATAR</b>	Required
<b>UAC Application</b>	Required
<b>Course Exclusions</b>	Yes- <a href="#">please check website</a>
<b>Opening date</b>	12 April 2022
<b>Closing date</b>	19 September 2022
<b>Assessment Criteria/Supporting Documentation</b>	<ul style="list-style-type: none"><li>• Personal statement responding to three questions</li><li>• Year 11 studies and specific performance in subjects relevant to chosen course</li><li>• School ratings</li><li>• Some courses require portfolio submission</li></ul>
<b>Hints</b>	<ul style="list-style-type: none"><li>• Word count must fall between 200-250 for each response</li><li>• Have a look at <a href="https://nailit.unsw.edu.au/">https://nailit.unsw.edu.au/</a> for help with your personal statement</li></ul>
<b>Apply/More Info</b>	<a href="https://www.uac.edu.au/current-applicants/schools-recommendation-schemes">https://www.uac.edu.au/current-applicants/schools-recommendation-schemes</a>
<b>Other Entry Schemes and Alternate Pathways</b>	<ul style="list-style-type: none"><li>• <a href="#">Portfolio Entry</a></li><li>• <a href="#">Indigenous Admission Scheme</a></li><li>• <a href="#">Preparation Program</a></li><li>• <a href="#">ACCESS Scheme</a></li></ul>





## E12

## Schools Recommendation Scheme

<b>Eligibility</b>	NSW Year 12 students eligible through UAC's EAS under SEIFA, disadvantaged school or financial hardship
<b>ATAR</b>	Required
<b>UAC Application</b>	Required
<b>Course Exclusions</b>	Yes- <a href="#">please check on website</a>
<b>Opening date</b>	12 April 2022
<b>Closing date</b>	19 September 2022
<b>Assessment Criteria/Supporting Documentation</b>	<ul style="list-style-type: none"><li>You must download the E12 Scheme template, respond to the three questions, then upload your responses to your SRS application (use the 'SRS Check and Change' function)</li></ul>
<b>Hints</b>	<ul style="list-style-type: none"><li>Each answer must not exceed 200 words</li><li>E12 is conditional on achieving a minimum selection rank which is lower than the standard minimum for that course</li><li>Successful E12 applicants gain a \$5950 scholarship</li></ul>
<b>Apply/More Info</b>	<a href="https://www.uac.edu.au/current-applicants/schools-recommendation-schemes">https://www.uac.edu.au/current-applicants/schools-recommendation-schemes</a>
<b>Other Entry Schemes and Alternate Pathways</b>	<ul style="list-style-type: none"><li><a href="#">Gadigal Program (Aboriginal and Torres Strait Islander pathway)</a></li><li><a href="#">Future Leaders Scheme</a></li><li><a href="#">Guaranteed Entry</a></li></ul>



## Schools Recommendation Scheme

<b>Eligibility</b>	NSW Year 12 students eligible through UAC's EAS under SEIFA, disadvantaged school or financial hardship
<b>ATAR</b>	Required
<b>UAC Application</b>	Required
<b>Course Exclusions</b>	Yes: <ul style="list-style-type: none"><li>• 601010 B Accounting</li><li>• 603210 B Information Technology</li><li>• 606004–05 B Nursing (accelerated programs)</li></ul>
<b>Opening date</b>	12 April 2022
<b>Closing date</b>	19 September 2022
<b>Assessment Criteria/Supporting Documentation</b>	<ul style="list-style-type: none"><li>• Be rated as suitable for tertiary study by your school</li></ul>
<b>Hints</b>	<ul style="list-style-type: none"><li>• minimum ATAR of 80.00 for law</li><li>• minimum ATAR of 69.00 for all other courses</li></ul>
<b>Apply/More Info</b>	<a href="https://www.uac.edu.au/current-applicants/schools-recommendation-schemes">https://www.uac.edu.au/current-applicants/schools-recommendation-schemes</a>
<b>Other Entry Schemes and Alternate Pathways</b>	<ul style="list-style-type: none"><li>• <a href="#">UTS Early Entry Program (see next page)</a></li><li>• <a href="#">UTS College</a></li><li>• <a href="#">Jumbunna Pathways Program</a></li><li>• <a href="#">Edge Early Entry (Engineering and IT)</a></li></ul>



## UTS Early Entry Program

## Direct Entry Scheme

<b>Eligibility</b>	Year 12 students nationwide
<b>ATAR</b>	Required for Law and Education courses
<b>UAC Application</b>	Not required
<b>Course Exclusions</b>	Yes- <a href="#">please check the website</a>
<b>Opening date</b>	Check website to register interest
<b>Closing date</b>	Check website updates for deadline
<b>Assessment Criteria/Supporting Documentation</b>	<ul style="list-style-type: none"><li>• <a href="#">Year 11 results</a> (if completing Year 12 in NSW/ACT, your results will be automatically applied. Interstate applicants must supply results using the results form)</li><li>• Conditional offer based on completion of HSC or equivalent</li></ul>
<b>Hints</b>	<ul style="list-style-type: none"><li>• minimum ATAR of 80.00 for law</li><li>• minimum ATAR of 70.00 for education</li></ul>
<b>Apply/More Info</b>	<a href="https://www.uts.edu.au/study/undergraduate/admission-requirements/admissions-schemes/uts-early-entry-program">https://www.uts.edu.au/study/undergraduate/admission-requirements/admissions-schemes/uts-early-entry-program</a>



## UOW Early Admission

## Direct Entry Scheme

<b>Eligibility</b>	Year 12 students nationwide
<b>ATAR</b>	Not required
<b>UAC Application</b>	Not required
<b>Course Exclusions</b>	Yes- <a href="#">please check website</a>
<b>Opening date</b>	18 July 2022
<b>Closing date</b>	12 August 2022
<b>Assessment Criteria/Supporting Documentation</b>	<ul style="list-style-type: none"><li>• Year 11 grades</li><li>• Your response to four questions</li><li>• Shortlisted applicants will be invited to an interview or online session</li></ul>
<b>Hints</b>	<ul style="list-style-type: none"><li>• Watch the 500 character limit</li><li>• <a href="#">View the steps online</a></li><li>• You can select two course preferences</li><li>• Successful applicants who completed Year 12 at a high school in rural or regional Australia, and apply to live on campus, will be considered for a \$5000 rent discount for the first year</li></ul>
<b>Apply/More Info</b>	<a href="https://www.uow.edu.au/early-admission/">https://www.uow.edu.au/early-admission/</a>
<b>Other Entry Schemes and Alternate Pathways</b>	<ul style="list-style-type: none"><li>• <a href="#">University Entrance Program</a></li><li>• <a href="#">Indigenous Admissions Program</a></li><li>• <a href="#">UOW College</a></li></ul>



## Schools Recommendation Scheme

<b>Eligibility</b>	Year 12 applicants nationwide who have completed SRS in UAC
<b>ATAR</b>	Not required
<b>UAC Application</b>	Required
<b>Course Exclusions</b>	Yes- <a href="#">please check website</a>
<b>Opening date</b>	12 April 2022
<b>Closing date</b>	19 September 2022
<b>Assessment Criteria/Supporting Documentation</b>	<ul style="list-style-type: none"><li>• Year 11 studies</li><li>• School ratings</li></ul>
<b>Hints</b>	<ul style="list-style-type: none"><li>• UAC requires payment for undergraduate admission before you can start your SRS application</li><li>• <a href="#">Follow instructions here</a></li></ul>
<b>Apply/More Info</b>	<a href="https://www.uac.edu.au/current-applicants/schools-recommendation-schemes">https://www.uac.edu.au/current-applicants/schools-recommendation-schemes</a>
<b>Other Entry Schemes and Alternate Pathways</b>	<ul style="list-style-type: none"><li>• <a href="#">HSC True Reward (see next page)</a></li><li>• <a href="#">Aboriginal and Torres Strait Islander Pathway Program</a></li><li>• <a href="#">The College</a></li><li>• <a href="#">Bonus Points (Adjustment Factors)</a></li></ul>



## HSC True Reward

## Direct Entry Scheme

<b>Eligibility</b>	NSW Year 12 students undertaking an HSC
<b>ATAR</b>	Not required
<b>UAC Application</b>	Not required
<b>Course Exclusions</b>	Yes- <a href="#">please check website</a>
<b>Opening date</b>	Check website updates
<b>Closing date</b>	Check website updates
<b>Assessment Criteria/Supporting Documentation</b>	<ul style="list-style-type: none"><li>• Based on year 11 grades in the August, September and December rounds</li><li>• Based on Year 12 HSC band results in January round</li></ul>
<b>Hints</b>	<ul style="list-style-type: none"><li>• <a href="#">Search the subject grades and bands needed for your desired course</a></li></ul>
<b>Apply/More Info</b>	<a href="https://westernsydney.uac.edu.au/ws/">https://westernsydney.uac.edu.au/ws/</a>





## Personal Competencies Statement

## Alternative Entry Scheme

<b>Eligibility</b>	Anyone without an ATAR or other qualifications
<b>ATAR</b>	Not required
<b>SATAC Application</b>	Required
<b>Course Exclusions</b>	<u>Check the admission criteria of your desired course</u>
<b>Opening date</b>	Check SATAC website for key dates
<b>Closing date</b>	Check SATAC website for key dates
<b>Assessment Criteria/Supporting Documentation</b>	<ul style="list-style-type: none"><li>• Complete the statement and upload to your SATAC application</li></ul>
<b>Hints</b>	<ul style="list-style-type: none"><li>• Follow the instructions outlined on the SATAC website</li></ul>
<b>Apply/More Info</b>	<u><a href="https://www.satac.edu.au/personal-competencies-statement">https://www.satac.edu.au/personal-competencies-statement</a></u>
<b>Other Entry Schemes and Alternate Pathways</b>	<ul style="list-style-type: none"><li>• <u>Tertiary Enabling Program</u></li><li>• <u>STAT</u></li><li>• VET</li></ul> <p>Once you have completed a national VET qualification at Certificate III or above, you will meet the minimum entry requirements to most undergraduate courses at CDU</p> <ul style="list-style-type: none"><li>• <u>Preparation for Tertiary Success (Indigenous program)</u></li><li>• Guaranteed ATAR</li></ul> <p>Meet the minimum ATAR of 60 to gain entry into most courses at CDU</p>



## Year 12 Early Entry

## Direct Entry Scheme

<b>Eligibility</b>	Year 12 students nationwide
<b>ATAR</b>	Required
<b>QTAC Application</b>	Not required
<b>Course Exclusions</b>	Yes: Medical program
<b>Opening date</b>	Now open
<b>Closing date</b>	16 January 2023
<b>Assessment Criteria/Supporting Documentation</b>	<ul style="list-style-type: none"><li>• Complete online application</li><li>• Submit Year 11 reports and Year 12 mid-report</li><li>• School will be asked to send a reference form including predicted ATAR</li></ul>
<b>Hints</b>	<ul style="list-style-type: none"><li>• Although applications are already open, it is best to hold off until you have all required school reports</li><li>• Offers made conditional of Year 12 completion and meeting any subject prerequisite requirements</li><li>• <u><a href="#">Bond is a private university so check FEE-HELP</a></u></li></ul>
<b>Apply/More Info</b>	<u><a href="https://student-bond.studylink.com/index.cfm?event=security.showLogin&amp;msg=eventsecured&amp;fr=sp&amp;en=default">https://student-bond.studylink.com/index.cfm?event=security.showLogin&amp;msg=eventsecured&amp;fr=sp&amp;en=default</a></u>
<b>Other Entry Schemes and Alternate Pathways</b>	<ul style="list-style-type: none"><li>• <u><a href="#">Diploma Preparation Program (students 17-21yrs may be offered a place through interview process)</a></u></li><li>• <u><a href="#">Adjustments factors</a></u></li></ul>





## Principal's Recommendation

## Direct Entry Scheme

<b>Eligibility</b>	Year 12 students nationwide
<b>ATAR</b>	Not required
<b>QTAC Application</b>	Not required
<b>Course Exclusions</b>	Yes- <a href="#">please check the website</a>
<b>Opening date</b>	Early 2022- now open
<b>Closing date</b>	1 December 2022
<b>Assessment Criteria/Supporting Documentation</b>	<ul style="list-style-type: none"><li>Supporting letter signed and dated by your principal, on school letterhead, listing your full name and the course you are applying for</li></ul>
<b>Hints</b>	<ul style="list-style-type: none"><li><a href="#">View a sample letter/template here</a></li></ul>
<b>Apply/More Info</b>	<a href="https://applyonline.cqu.edu.au/registration/register?_ga=2.19524792.1461192353.1648153524-1271505910.1645754195">https://applyonline.cqu.edu.au/registration/register?_ga=2.19524792.1461192353.1648153524-1271505910.1645754195</a>
<b>Other Entry Schemes and Alternate Pathways</b>	<ul style="list-style-type: none"><li><a href="#">Skills for Tertiary Education Preparatory Studies (STEPS)</a></li></ul>



## Early Offer Guarantee

## Early Entry Scheme

<b>Eligibility</b>	<ul style="list-style-type: none"><li>• QLD Year 12 students undertaking the QCE or IB</li><li>• Northern NSW students undertaking the HSC- <a href="#">check the list of schools under the 'invitations and eligibility' heading in the FAQs</a></li></ul>
<b>ATAR</b>	Scheme not based on ATAR but requires specific types of courses that qualify you for an ATAR
<b>QTAC Application</b>	Required
<b>Course Exclusions</b>	Yes- <a href="#">check the website</a>
<b>Opening date</b>	2 August 2022
<b>Closing date</b>	14 October 2022
<b>Assessment Criteria/Supporting Documentation</b>	<ul style="list-style-type: none"><li>• Meet minimum achievement levels specified and provide evidence of this</li></ul>
<b>Hints</b>	<ul style="list-style-type: none"><li>• Eligible applicants will receive an invite within 3 working days of adding an included Griffith degree in your QTAC preference list</li><li>• Evidence to be uploaded to QTAC</li></ul>
<b>Apply/More Info</b>	<a href="https://www.qtac.edu.au/application-services/">https://www.qtac.edu.au/application-services/</a>
<b>Other Entry Schemes and Alternate Pathways</b>	<ul style="list-style-type: none"><li>• <a href="#">Foundation Program</a></li><li>• <a href="#">VET Guarantee</a></li><li>• <a href="#">ATAR Guarantee</a></li></ul>



## Early Offer Program

## Early Entry Scheme

<b>Eligibility</b>	Year 12 students nationwide
<b>ATAR</b>	Not required
<b>QTAC Application</b>	Required
<b>Course Exclusions</b>	Yes- <a href="#">check the website</a>
<b>Opening date</b>	16 May 2022
<b>Closing date</b>	14 October 2022
<b>Assessment Criteria/Supporting Documentation</b>	<ul style="list-style-type: none"><li>• A nomination form is to be completed and submitted to your school for consideration- <a href="#">download the nomination form</a></li><li>• Offers made are conditional on completion of senior secondary certificate</li></ul>
<b>Hints</b>	<ul style="list-style-type: none"><li>• Schools are to forward recommended nomination forms to JCU</li><li>• Place the JCU course as your number one preference in QTAC</li></ul>
<b>Apply/More Info</b>	<a href="https://www.gtac.edu.au/application-services/">https://www.gtac.edu.au/application-services/</a>
<b>Other Entry Schemes and Alternate Pathways</b>	<ul style="list-style-type: none"><li>• <a href="#">Guaranteed Admissions Plan (ATAR and/or VET)</a></li><li>• <a href="#">Adjustment factors</a></li><li>• <a href="#">Tertiary Access Course</a></li></ul>



QLD

Queensland University of Technology

## Year 12 Early Offer Scheme

## Early Entry Scheme

<b>Eligibility</b>	QLD Year 12 students undertaking the QCE (five ATAR General subjects or AQF VET Diploma) or IB
<b>ATAR</b>	Scheme not based on ATAR but requires specific types of courses that might usually qualify you for an ATAR
<b>QTAC Application</b>	Required
<b>Course Exclusions</b>	Yes- <a href="#">please check website</a>
<b>Opening date</b>	2 August 2022
<b>Closing date</b>	14 October 2022
<b>Assessment Criteria/Supporting Documentation</b>	<ul style="list-style-type: none"><li>• <a href="#">Meet minimum achievement levels specified for group 1 and group 2 courses</a></li><li>• Screenshot of your Results page in your QCAA Student Portal</li></ul>
<b>Hints</b>	<ul style="list-style-type: none"><li>• Eligible students who place a QUT course in their QTAC preference list will be sent an email invite to the program</li><li>• Evidence to be uploaded to QTAC</li></ul>
<b>Apply/More Info</b>	<a href="https://www.gtac.edu.au/application-services/">https://www.gtac.edu.au/application-services/</a>
<b>Other Entry Schemes and Alternate Pathways</b>	<ul style="list-style-type: none"><li>• <a href="#">Centralised Assessment and Selection Program (Aboriginal and Torres Strait Islander students)</a></li><li>• <a href="#">Adjustment Schemes</a></li><li>• <a href="#">Guaranteed course offers</a></li></ul>



## Rural Access Scheme

## Adjustment Factor Scheme

<b>Eligibility</b>	You must have lived in a geographic region classified as RA2-5 for at least 5 consecutive years, or for 10 years cumulatively
<b>ATAR</b>	Required
<b>QTAC Application</b>	Required
<b>Course Exclusions</b>	Nil
<b>Opening date</b>	2 August 2022
<b>Closing date</b>	14 October 2022
<b>Assessment Criteria/Supporting Documentation</b>	<ul style="list-style-type: none"><li>• QTAC will ask you to check your eligibility and your ASGS Remoteness Area (ASGS-RA) category</li><li>• Submit a cover sheet and your supporting documentation</li><li>• Acceptable supporting evidence must contain proof of residency/residential address, e.g. letter from school, bank statements, utility invoices</li></ul>
<b>Hints</b>	<ul style="list-style-type: none"><li>• When you list a relevant program as a preference on your QTAC application, QTAC will contact you about applying for the Rural Access Scheme</li><li>• If your application is approved, adjustments will be automatically applied to all relevant UQ preferences</li></ul>
<b>Apply/More Info</b>	<a href="https://future-students.uq.edu.au/admissions/undergraduate/review-admission-schemes/rural-access-scheme">https://future-students.uq.edu.au/admissions/undergraduate/review-admission-schemes/rural-access-scheme</a>
<b>Other Entry Schemes and Alternate Pathways</b>	<ul style="list-style-type: none"><li>• <a href="#">Subject Incentive Scheme</a></li><li>• <a href="#">Admission Scheme (Aboriginal and Torres Strait Islander entry)</a>.</li><li>• <a href="#">Undergraduate Law Admission Scheme</a></li></ul>



## USQ Early Offer

## Early Entry Scheme

<b>Eligibility</b>	Year 12 students with proven academic achievement and study skills
<b>ATAR</b>	Not required
<b>QTAC Application</b>	Required
<b>Course Exclusions</b>	Nil
<b>Opening date</b>	2 August 2022
<b>Closing date</b>	14 October 2022
<b>Assessment Criteria/Supporting Documentation</b>	<ul style="list-style-type: none"><li>• USQ first preference in QTAC</li><li>• Year 11 report</li><li>• School recommendation - <u><a href="#">complete the Early Offer Application Form in liaison with your school</a></u></li></ul>
<b>Hints</b>	<ul style="list-style-type: none"><li>• The form and your report must be sent prior to the due date by the principal or principal's delegate on behalf of you</li><li>• Offers are conditional based on completion of senior secondary school certificate</li></ul>
<b>Apply/More Info</b>	<u><a href="https://www.qtac.edu.au/application-services/">https://www.qtac.edu.au/application-services/</a></u>
<b>Other Entry Schemes and Alternate Pathways</b>	<ul style="list-style-type: none"><li>• <u><a href="#">VET Graduate Entry (Cert III or above)</a></u></li><li>• <u><a href="#">Accelerated Entry Pathway Program</a></u></li><li>• <u><a href="#">Tertiary Preparation Program</a></u></li></ul>



## Early Offer Guarantee

## Early Entry Scheme

<b>Eligibility</b>	Year 12 students nationwide
<b>ATAR</b>	Not required
<b>QTAC Application</b>	Required
<b>Course Exclusions</b>	Yes- <ul style="list-style-type: none"><li>• Bachelor of Biomedical Science (Accelerated)</li><li>• Bachelor of Dietetics</li><li>• Bachelor of Medical Science</li><li>• Bachelor of Midwifery</li><li>• Bachelor of Music</li></ul>
<b>Opening date</b>	2 August 2022
<b>Closing date</b>	10 October 2022
<b>Assessment Criteria/Supporting Documentation</b>	<ul style="list-style-type: none"><li>• USC first preference in QTAC</li><li>• School recommendation - <u><a href="#">complete the Early Offer Guarantee Form in liaison with your school</a></u></li></ul>
<b>Hints</b>	<ul style="list-style-type: none"><li>• The form and your report must be sent prior to the due date by the principal or principal's delegate on behalf of you</li><li>• Offers are conditional based on completion of senior secondary school certificate</li></ul>
<b>Apply/More Info</b>	<u><a href="https://www.qtac.edu.au/application-services/">https://www.qtac.edu.au/application-services/</a></u>
<b>Other Entry Schemes and Alternate Pathways</b>	<ul style="list-style-type: none"><li>• <u><a href="#">Access USC (includes equity and elite athlete adjustments)</a></u>.</li><li>• <u><a href="#">Tertiary Preparation Pathway</a></u>.</li></ul>



## School Recommendation Program

## Early Entry Scheme

<b>Eligibility</b>	Year 12 students nationwide
<b>ATAR</b>	Not required
<b>SATAC Application</b>	Required
<b>Course Exclusions</b>	Yes- <a href="#">check the website</a>
<b>Opening date</b>	Check SATAC website for key dates
<b>Closing date</b>	Check SATAC website for key dates
<b>Assessment Criteria/Supporting Documentation</b>	<ul style="list-style-type: none"><li>• Complete section A of the <a href="#">School Recommendation Program application form</a></li><li>• Collate/attach any relevant documentation, including your two latest school reports</li><li>• Hand to your principal/school delegate to complete section B and submit</li></ul>
<b>Hints</b>	<ul style="list-style-type: none"><li>• Take the applicant statement seriously. The university is looking for a combination of academic performance and illustration of achievements in other aspects of life and other studies (TAFE/VET/community involvement/work experience/volunteering).</li></ul>
<b>Apply/More Info</b>	<a href="https://www.satac.edu.au/how-to-apply_">https://www.satac.edu.au/how-to-apply_</a>
<b>Other Entry Schemes and Alternate Pathways</b>	<ul style="list-style-type: none"><li>• <a href="#">Indigenous Admission Scheme</a></li><li>• <a href="#">Foundation Studies</a></li><li>• <a href="#">Universities Equity Scheme (adjustment factors)</a></li></ul>





## Direct Entry Scheme

<b>Eligibility</b>	Year 12 students in SA, QLD and NSW
<b>ATAR</b>	Not required
<b>SATAC Application</b>	<ul style="list-style-type: none"><li>• Required to accept an offer in SA</li><li>• QLD and NSW offers can be accepted directly with Torrens</li></ul>
<b>Course Exclusions</b>	Nil
<b>Opening date</b>	2 May 2022
<b>Closing date</b>	31 October 2022
<b>Assessment Criteria/Supporting Documentation</b>	<ul style="list-style-type: none"><li>• Complete the enquiry form on the website or the online application for a representative to make contact and confirm your details</li></ul>
<b>Hints</b>	<ul style="list-style-type: none"><li>• Students in Victoria must apply to Torrens using VTAC</li><li>• <u><a href="#">Torrens is a private university so check FEE-HELP</a></u></li></ul>
<b>Apply/More Info</b>	<p><u><a href="https://www.torrens.edu.au/how-to-apply/early-entry-program">https://www.torrens.edu.au/how-to-apply/early-entry-program</a></u> <u><a href="https://apply.torrens.edu.au/">https://apply.torrens.edu.au/</a></u></p>
<b>Other Entry Schemes and Alternate Pathways</b>	<ul style="list-style-type: none"><li>• <u><a href="#">Year 12 Certificate</a></u></li><li>• <u><a href="#">Diploma</a></u></li><li>• <u><a href="#">Experience, portfolio, interviews</a></u></li></ul>



## Subject-based Admission

## Grades Scheme

<b>Eligibility</b>	Year 12 students nationwide
<b>ATAR</b>	Required
<b>SATAC Application</b>	Required
<b>Course Exclusions</b>	<ul style="list-style-type: none"><li>• Yes - <a href="#">please check website</a></li></ul>
<b>Opening date</b>	Check SATAC website for key dates
<b>Closing date</b>	Check SATAC website for key dates
<b>Assessment Criteria/Supporting Documentation</b>	<ul style="list-style-type: none"><li>• Year 12 grades</li><li>• <a href="#">Check eligible degree and grade bands required</a></li></ul>
<b>Hints</b>	<ul style="list-style-type: none"><li>• Lodge SATAC application with University of Adelaide preference to be automatically considered under this scheme</li><li>• Offers are conditional on year 12 completion with selection rank</li></ul>
<b>Apply/More Info</b>	<a href="https://www.satac.edu.au/">https://www.satac.edu.au/</a>
<b>Other Entry Schemes and Alternate Pathways</b>	<ul style="list-style-type: none"><li>• Keep an eye on the <a href="#">Year 11 Entry Pathway</a>.</li><li>• <a href="#">Access Pathway_(Aboriginal and Torres Strait Islander students)</a></li></ul>



## UniSA Guaranteed Entry

## Grades Scheme

<b>Eligibility</b>	Year 12 SACE Stage 2 students or <u>interstate equivalent</u>
<b>ATAR</b>	Required
<b>SATAC Application</b>	Required
<b>Course Exclusions</b>	Yes- courses dependent on your <u>grades</u> or <u>selection rank</u>
<b>Opening date</b>	Check SATAC website for key dates
<b>Closing date</b>	Check SATAC website for key dates
<b>Assessment Criteria/Supporting Documentation</b>	<ul style="list-style-type: none"><li>Eligible students with a UniSA preference will automatically be considered under <u>Selection Rank Guaranteed Entry and Year 12 Grades Guaranteed Entry</u>.</li></ul>
<b>Hints</b>	<ul style="list-style-type: none"><li>Conditional of achieving an ATAR above 50.00 for Year 12 Grade Entry</li></ul>
<b>Apply/More Info</b>	<a href="https://www.satac.edu.au/">https://www.satac.edu.au/</a>
<b>Other Entry Schemes and Alternate Pathways</b>	<ul style="list-style-type: none"><li><u>Adjustment Factors</u></li><li><u>Aboriginal Pathway Program</u></li><li><u>UniSA College (Diplomas and Foundation Studies)</u></li></ul>



## Schools Recommendation Program Direct Entry Scheme

<b>Eligibility</b>	Year 12 students nationwide
<b>ATAR</b>	Not required
<b>TAC Application</b>	Not required
<b>Course Exclusions</b>	Yes: <ul style="list-style-type: none"><li>• Bachelor of Medicine and Bachelor of Surgery</li><li>• Paramedicine</li><li>• Nursing courses (if you're studying in Tasmania, you'll be assessed based on your ATAR. If you're studying in Sydney, you can be assessed as part of the Schools Recommendation Program)</li><li>• Bachelor of Health Science (Medical Radiation Science)</li></ul>
<b>Opening date</b>	30 June 2022
<b>Closing date</b>	Rnd 1- 1 August 2022 Rnd 2- 2 September 2022 Rnd 3- 7 September 2022
<b>Assessment Criteria/Supporting Documentation</b>	<ul style="list-style-type: none"><li>• Year 11 results</li><li>• School assessment of your capabilities</li></ul>
<b>Hints</b>	<ul style="list-style-type: none"><li>• You can select up to five course preferences</li><li>• Offers are conditional of Year 12 completion</li></ul>
<b>Apply/More Info</b>	<a href="https://apply.utas.edu.au/Authentication/SignIn">https://apply.utas.edu.au/Authentication/SignIn</a> <a href="https://www.utas.edu.au/study/schools-recommendation-program">https://www.utas.edu.au/study/schools-recommendation-program</a>
<b>Other Entry Schemes and Alternate Pathways</b>	<ul style="list-style-type: none"><li>• <a href="#">University Preparation Program</a></li><li>• <a href="#">Murina Program (Aboriginal and Torres Strait Islander pathway)</a></li></ul>



## Regional Access Scheme

## Early Entry Scheme

<b>Eligibility</b>	Year 12 students looking to study at Waterfront, Waurn Ponds or Warrnambool campuses
<b>ATAR</b>	Not required
<b>VTAC Application</b>	Required
<b>Course Exclusions</b>	<a href="#">Check available courses at the selected campuses</a>
<b>Opening date</b>	1 August 2022
<b>Closing date</b>	29 September
<b>Assessment Criteria/Supporting Documentation</b>	<ul style="list-style-type: none"><li>• Online application form with submission of Deakin statement</li><li>• You must use one reference in your statement</li><li>• You can upload supporting documents that verify your statement, e.g. a letter of reference for voluntary work experience or evidence of school captancy</li></ul>
<b>Hints</b>	<ul style="list-style-type: none"><li>• Maximum of 1000 characters for your Deakin statement</li><li>• The university want to know about your soft skills</li><li>• The website provides links to resources to assist your writing and clearly outlines the expected structure</li></ul>
<b>Apply/More Info</b>	<a href="https://www.deakin.edu.au/study/how-to-apply/special-entry-access-scheme/deakin-regional-access-scheme/regional-access-scheme-application-form">https://www.deakin.edu.au/study/how-to-apply/special-entry-access-scheme/deakin-regional-access-scheme/regional-access-scheme-application-form</a>
<b>Other Entry Schemes and Alternate Pathways</b>	<ul style="list-style-type: none"><li>• <a href="#">Indigenous Access Scheme</a></li><li>• <a href="#">Elite Athletes and Performers</a></li><li>• <a href="#">Special Entry Access Scheme</a></li></ul>



## Early Offer Program

## Early Entry Scheme

<b>Eligibility</b>	Year 12 students nationwide
<b>ATAR</b>	Not required
<b>VTAC Application</b>	Required
<b>Course Exclusions</b>	<a href="#">Check website for available courses</a>
<b>Opening date</b>	1 August 2022
<b>Closing date</b>	December 2022- check website for updates
<b>Assessment Criteria/Supporting Documentation</b>	<ul style="list-style-type: none"><li>• Complete the online application form and check conditions and entry requirements</li></ul>
<b>Hints</b>	<ul style="list-style-type: none"><li>• Provide the same email address in your online application that you use for VTAC</li></ul>
<b>Apply/More Info</b>	<a href="https://federation.edu.au/future-students/study-at-federation/early-offer-program">https://federation.edu.au/future-students/study-at-federation/early-offer-program</a>
<b>Other Entry Schemes and Alternate Pathways</b>	<ul style="list-style-type: none"><li>• <a href="#">Foundation Access Studies</a></li><li>• <a href="#">Guaranteed ATAR</a></li><li>• <a href="#">Special Entry Access Scheme (adjustment factors)</a></li></ul>



## Aspire Early Admissions Program Direct Entry Scheme

<b>Eligibility</b>	Year 12 students nationwide who holds/has held volunteer or leadership roles in the community
<b>ATAR</b>	Required
<b>VTAC Application</b>	Required (alternatively you can submit a UAC application)
<b>Course Exclusions</b>	No- but there are additional requirements for entry to Bachelor of Biomedical Science (Medical) where your Aspire offer will be for an interview only, not a conditional offer in the degree
<b>Opening date</b>	26 April 2022
<b>Closing date</b>	16 September 2022
<b>Assessment Criteria/Supporting Documentation</b>	<ul style="list-style-type: none"><li>• You must apply to La Trobe's Aspire Program to have access to the early admissions program</li><li>• <u>Application requires a 400 word description of your involvement in community service and the impact that has had on self and the community.</u></li><li>• Completion of VCE/HSC or equivalent studies</li></ul>
<b>Hints</b>	<ul style="list-style-type: none"><li>• <u>Meet the Aspire ATAR for your course preference</u></li><li>• If you don't meet your Aspire ATAR requirements, you are eligible to apply for Second Chance Aspire</li><li>• Successful applicants who achieve an ATAR of 80+ will automatically be considered for one of 40x \$20,000 Aspire scholarships</li><li>• The Aspire program gives you free access to hundreds of VCE and HSC study guides and revision lectures</li></ul>
<b>Apply/More Info</b>	<a href="https://applyaspire.latrobe.edu.au/">https://applyaspire.latrobe.edu.au/</a>
<b>Other Entry Schemes and Alternate Pathways</b>	<ul style="list-style-type: none"><li>• <u>Priority Access Program</u></li><li>• <u>Regional Benefits Program</u></li></ul>



## Monash Guarantee

## Special Entry Access Scheme

<b>Eligibility</b>	Year 12 students nationwide who meet or exceed the Monash Guarantee ATAR and demonstrate one or more of the following: <ul style="list-style-type: none"><li>• have experienced financial disadvantage</li><li>• are an Indigenous Australian</li><li>• attend a Monash listed underrepresented school</li><li>• live in a low socioeconomic area</li></ul>
<b>ATAR</b>	Required
<b>VTAC Application</b>	Required
<b>Course Exclusions</b>	Yes- the Monash Guarantee does not apply to the Law Pathway or Scholars programs
<b>Opening date</b>	1 August 2022
<b>Closing date</b>	29 September 2022
<b>Assessment Criteria/Supporting Documentation</b>	<ul style="list-style-type: none"><li>• Submit a SEAS application through VTAC</li><li>• Meet all required prerequisites and other requirements, e.g. UCAT, portfolio, interview or audition</li></ul>
<b>Hints</b>	<ul style="list-style-type: none"><li>• If you don't meet the guaranteed entry ATAR, the information you provide will instead be considered under SEAS for adjustments to your selection rank</li></ul>
<b>Apply/More Info</b>	<a href="https://www.monash.edu/study/how-to-apply/entry-schemes/the-monash-guarantee">https://www.monash.edu/study/how-to-apply/entry-schemes/the-monash-guarantee</a>
<b>Other Entry Schemes and Alternate Pathways</b>	<ul style="list-style-type: none"><li>• <a href="#">Pathways to Monash Law</a></li><li>• <a href="#">Monash Indigenous Access Program</a></li><li>• <a href="#">Monash College Diplomas</a></li></ul>





# VIC Royal Melbourne Institute of Technology

## RMIT Early Offer

## Early Entry Scheme

<b>Eligibility</b>	Year 12 students nationwide
<b>ATAR</b>	Required
<b>VTAC Application</b>	Required
<b>Course Exclusions</b>	Nil
<b>Opening date</b>	May 2022
<b>Closing date</b>	September 2022 - check website for updates
<b>Assessment Criteria/Supporting Documentation</b>	<ul style="list-style-type: none"><li>• Summarise your skills and experience in 200 words and align these to two of the five categories (refer to application guide)</li><li>• Provide evidence of your experience (such as a completion certificate, reference letter, or link to something epic you've created)</li></ul>
<b>Hints</b>	<ul style="list-style-type: none"><li>• Your application is to be lodged through the RMIT website</li><li>• The Early Offer program is conditional on you meeting the specified lowered ATAR</li><li>• <a href="#">View the application guide</a></li></ul>
<b>Apply/More Info</b>	<a href="https://www.rmit.edu.au/study-with-us/applying-to-rmit/local-student-applications/access-rmit/early-offer">https://www.rmit.edu.au/study-with-us/applying-to-rmit/local-student-applications/access-rmit/early-offer</a>
<b>Other Entry Schemes and Alternate Pathways</b>	<ul style="list-style-type: none"><li>• <a href="#">Guaranteed Pathways</a></li><li>• <a href="#">Indigenous Access Program</a></li><li>• <a href="#">Special Entry Access Scheme</a></li></ul>



## Early Entry Program

## Early Entry Scheme

<b>Eligibility</b>	Year 12 students nationwide
<b>ATAR</b>	Not required
<b>VTAC Application</b>	Required
<b>Course Exclusions</b>	Yes- <u><a href="#">please check website</a></u>
<b>Opening date</b>	Check website updates
<b>Closing date</b>	Check website updates
<b>Assessment Criteria/Supporting Documentation</b>	<ul style="list-style-type: none"><li>• Speak to your school for permission to seek a recommendation</li><li>• Complete the application and assessment</li><li>• Forward the email form to your school representative for completion</li></ul>
<b>Hints</b>	<ul style="list-style-type: none"><li>• Apply through VTAC and place your desired Swinburne course in the preference list</li><li>• Minor updates are going to be made to this program so please check the website</li></ul>
<b>Apply/More Info</b>	<u><a href="https://www.swinburne.edu.au/courses/planning-your-future/early-entry-program/">https://www.swinburne.edu.au/courses/planning-your-future/early-entry-program/</a></u>
<b>Other Entry Schemes and Alternate Pathways</b>	<ul style="list-style-type: none"><li>• <u><a href="#">Pathway Planner</a></u></li><li>• <u><a href="#">Special Entry Access Scheme</a></u></li></ul>



## Access Melbourne

## Special Entry Access Scheme

<b>Eligibility</b>	Year 12 students nationwide who demonstrate one or more of the access categories
<b>ATAR</b>	Required
<b>VTAC Application</b>	Required
<b>Course Exclusions</b>	<u><a href="#">Yes- please check website</a></u>
<b>Opening date</b>	1 August 2022
<b>Closing date</b>	29 September 2022
<b>Assessment Criteria/Supporting Documentation</b>	<ul style="list-style-type: none"><li>• Submit a SEAS application through VTAC</li><li>• Provide supporting documentation relevant to the category of disadvantage you are claiming</li></ul>
<b>Hints</b>	<ul style="list-style-type: none"><li>• Make sure to check the eligibility requirements as you may need to collect supporting documentation or write a personal statement</li><li>• Take a look at the Melbourne Access Scholarship</li></ul>
<b>Apply/More Info</b>	<u><a href="https://www.vtac.edu.au/access/seas/applying.html">https://www.vtac.edu.au/access/seas/applying.html</a></u>
<b>Other Entry Schemes and Alternate Pathways</b>	<ul style="list-style-type: none"><li>• <u><a href="#">Single Subject Study (Community Access Program)</a></u>,</li><li>• <u><a href="#">Equivalent Tests (meet the prerequisites)</a></u></li></ul>



## VU Guaranteed

## Entry Scheme

<b>Eligibility</b>	<u>Year 11 and/or 12 students from partner schools</u>
<b>ATAR</b>	Required
<b>VTAC Application</b>	Required
<b>Course Exclusions</b>	Nil- must meet all admission criteria
<b>Opening date</b>	1 August 2022
<b>Closing date</b>	29 September 2022
<b>Assessment Criteria/Supporting Documentation</b>	<ul style="list-style-type: none"><li>• Respond to four questions (max 100 words per question)</li><li>• Submit a VTAC application with your desired VU course in your preferences</li></ul>
<b>Hints</b>	<ul style="list-style-type: none"><li>• View sample answers on website to guide your responses</li><li>• Successful Year 11 applicants will be considered for a \$500 grant for Year 12 studies</li><li>• Successful Year 12 applicants will be considered for a \$2000 scholarship</li></ul>
<b>Apply/More Info</b>	<u><a href="https://www.vu.edu.au/study-at-vu/how-to-apply/special-admission-programs/vu-guaranteed">https://www.vu.edu.au/study-at-vu/how-to-apply/special-admission-programs/vu-guaranteed</a></u>
<b>Other Entry Schemes and Alternate Pathways</b>	<ul style="list-style-type: none"><li>• <u><a href="#">Foundations at VU</a></u></li><li>• <u><a href="#">Pathway Partners</a></u></li></ul>



## Early Offers Program

## Early Entry Scheme

<b>Eligibility</b>	Year 12 students studying at least 4 ATAR courses
<b>ATAR</b>	Required
<b>TISC Application</b>	Required
<b>Course Exclusions</b>	Yes- <a href="#">check the website FAQ section</a>
<b>Opening date</b>	4 April 2022
<b>Closing date</b>	2 December 2022
<b>Assessment Criteria/Supporting Documentation</b>	<ul style="list-style-type: none"><li>• Apply through TISC and include your desired Curtin course as your first preference</li><li>• Upload your latest school report</li><li>• Offers based on Year 11 results</li></ul>
<b>Hints</b>	<ul style="list-style-type: none"><li>• Must be on track to achieve admission criteria</li><li>• If you meet the eligibility requirements, you'll receive an early offer within 5-7 business days</li><li>• You will be eligible for the ATAR Achievement Scholarship if you apply through TISC and select Curtin as first preference prior to 2 December 2022</li></ul>
<b>Apply/More Info</b>	<a href="https://study.curtin.edu.au/undergraduate/early-offers/#apply">https://study.curtin.edu.au/undergraduate/early-offers/#apply</a>
<b>Other Entry Schemes and Alternate Pathways</b>	<ul style="list-style-type: none"><li>• <a href="#">StepUp to Curtin</a></li><li>• <a href="#">Portfolio Entry</a></li><li>• <a href="#">Access Curtin</a></li><li>• <a href="#">Indigenous Tertiary Enabling Course</a></li></ul>

## Early Offer Program

## Early Entry Scheme

<b>Eligibility</b>	Year 12 students nationwide studying 4 ATAR subjects or completing a Cert IV VET pathway
<b>ATAR</b>	Required (unless completing a Cert IV)
<b>TISC Application</b>	Required
<b>Course Exclusions</b>	Yes- please check website
<b>Opening date</b>	4 April 2022
<b>Closing date</b>	19 December 2022
<b>Assessment Criteria/Supporting Documentation</b>	<ul style="list-style-type: none"> <li>Place your chosen ECU course as first preference in TISC</li> <li>Provide predicted ATAR and/or Year 11 results</li> </ul>
<b>Hints</b>	<ul style="list-style-type: none"> <li>Must be on track to achieve admission criteria</li> </ul>
<b>Apply/More Info</b>	<a href="https://www.ecu.edu.au/degrees/early-offer-program">https://www.ecu.edu.au/degrees/early-offer-program</a>
<b>Other Entry Schemes and Alternate Pathways</b>	<ul style="list-style-type: none"> <li><a href="#">UniPrep</a></li> <li><a href="#">Experience Based Entry Scheme</a></li> </ul>





## Year 12 Early Offer Program

## Direct Entry Scheme

<b>Eligibility</b>	Year 12 students nationwide
<b>ATAR</b>	Required
<b>TISC Application</b>	Not required (but recommended)
<b>Course Exclusions</b>	Yes: <ul style="list-style-type: none"><li>• Bachelor of Science / Doctor of Veterinary Medicine</li></ul>
<b>Opening date</b>	4 April 2022
<b>Closing date</b>	9 December 2022
<b>Assessment Criteria/Supporting Documentation</b>	<ul style="list-style-type: none"><li>• Year 11 results (ATAR subjects) or mid-year Year 12 results (ATAR subjects)</li></ul>
<b>Hints</b>	<ul style="list-style-type: none"><li>• Although direct applications are accepted, it is recommended you also register through TISC</li><li>• Successful applicants will receive a conditional offer on a rolling basis from the date of application (within two to three of weeks of applying)</li></ul>
<b>Apply/More Info</b>	<a href="https://www.murdoch.edu.au/study/how-to-apply/year-12-early-offer-program">https://www.murdoch.edu.au/study/how-to-apply/year-12-early-offer-program</a>
<b>Other Entry Schemes and Alternate Pathways</b>	<ul style="list-style-type: none"><li>• <a href="#">Murdoch RISE</a></li><li>• <a href="#">Portfolio Entry</a></li><li>• <a href="#">OnTrack</a></li></ul>



## Young Achievers Early Offer

## Direct Entry Scheme

<b>Eligibility</b>	Year 12 students nationwide
<b>ATAR</b>	Required
<b>TISC/UAC Application</b>	Not required
<b>Course Exclusions</b>	Nil (open to any Bachelor's degree)
<b>Opening date</b>	4 April 2022
<b>Closing date</b>	30 September 2022
<b>Assessment Criteria/Supporting Documentation</b>	<ul style="list-style-type: none"><li>• Year 11 and 12 school reports</li><li>• A recommendation from your school or community group, or, any awards, certificates, articles, CV that demonstrate non-academic achievements</li><li>• Respond to three questions</li></ul>
<b>Hints</b>	<ul style="list-style-type: none"><li>• File sizes must not exceed 2MB each- there are also specific file formats to stick with</li><li>• <u><a href="#">If you choose to get your school to make a recommendation, school representatives can lodge an online submission</a></u></li></ul>
<b>Apply/More Info</b>	<u><a href="https://www.notredame.edu.au/study/early-offer/early-offer">https://www.notredame.edu.au/study/early-offer/early-offer</a></u>
<b>Other Entry Schemes and Alternate Pathways</b>	<ul style="list-style-type: none"><li>• UAC Schools Recommendation Scheme (<u><a href="#">see next page</a></u>)</li><li>• <u><a href="#">Tertiary Pathway Program</a></u></li><li>• <u><a href="#">Individual Factors</a></u></li></ul>

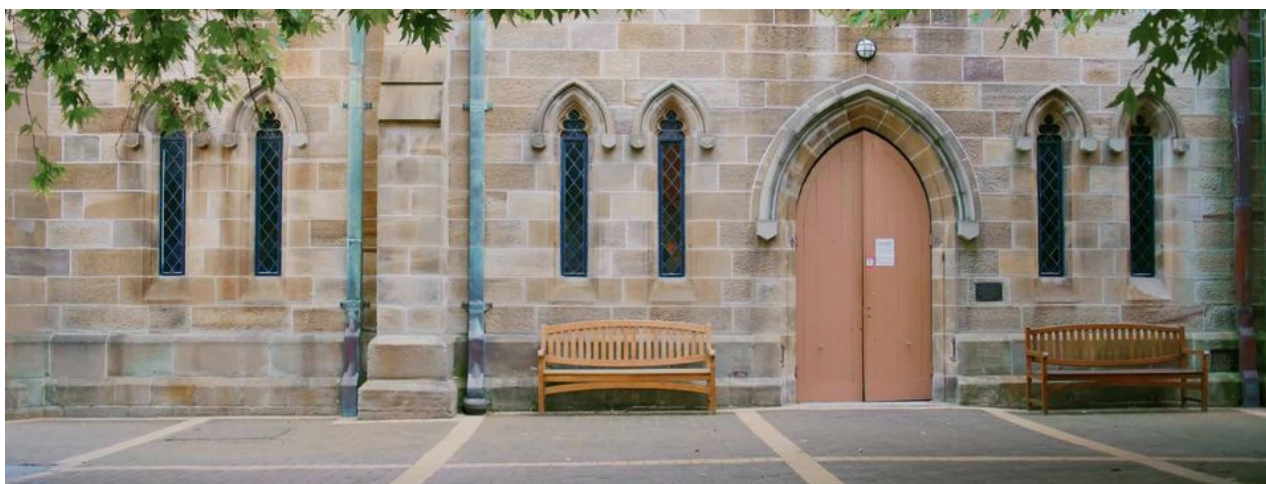




# WA/NSW University of Notre Dame

## Schools Recommendation Scheme

<b>Eligibility</b>	Year 12 students nationwide
<b>ATAR</b>	No required
<b>TISC/UAC Application</b>	UAC application required for SRS
<b>Course Exclusions</b>	Nil (open to any Bachelor's degree)
<b>Opening date</b>	12 April 2022
<b>Closing date</b>	19 September 2022
<b>Assessment Criteria/Supporting Documentation</b>	<ul style="list-style-type: none"><li>• Year 11 studies</li><li>• School ratings</li></ul>
<b>Hints</b>	<ul style="list-style-type: none"><li>• UAC requires payment for undergraduate admission before you can start your SRS application</li><li>• <a href="#"><u>Follow instructions here</u></a></li></ul>
<b>Apply/More Info</b>	<a href="https://www.uac.edu.au/current-applicants/schools-recommendation-schemes"><u>https://www.uac.edu.au/current-applicants/schools-recommendation-schemes</u></a>





## UWA Early Offers

## Direct Entry Scheme

<b>Eligibility</b>	Year 12 students nationwide
<b>ATAR</b>	Required
<b>TISC Application</b>	Not required
<b>Course Exclusions</b>	Yes: <ul style="list-style-type: none"><li>• Assured Pathways to Medicine</li><li>• Dental Medicine</li><li>• Pharmacy</li><li>• Podiatric Medicine</li></ul>
<b>Opening date</b>	Now open
<b>Closing date</b>	16 December 2022
<b>Assessment Criteria/Supporting Documentation</b>	<ul style="list-style-type: none"><li>• Year 11 results or mid Year 12 results</li></ul>
<b>Hints</b>	<ul style="list-style-type: none"><li>• Students must achieve a predicted ATAR of at least 80.00 or 78.00 for those eligible under Broadway, Fairway, First in Family or Indigenous pathways</li><li>• <a href="#">See the portal help guide</a></li></ul>
<b>Apply/More Info</b>	<a href="https://www.uwa.edu.au/study/How-to-apply#login">https://www.uwa.edu.au/study/How-to-apply#login</a>
<b>Other Entry Schemes and Alternate Pathways</b>	<ul style="list-style-type: none"><li>• <a href="#">Special Tertiary Admissions Test Pathway</a>.</li><li>• <a href="#">Fairway</a>.</li><li>• <a href="#">Broadway</a>.</li></ul>