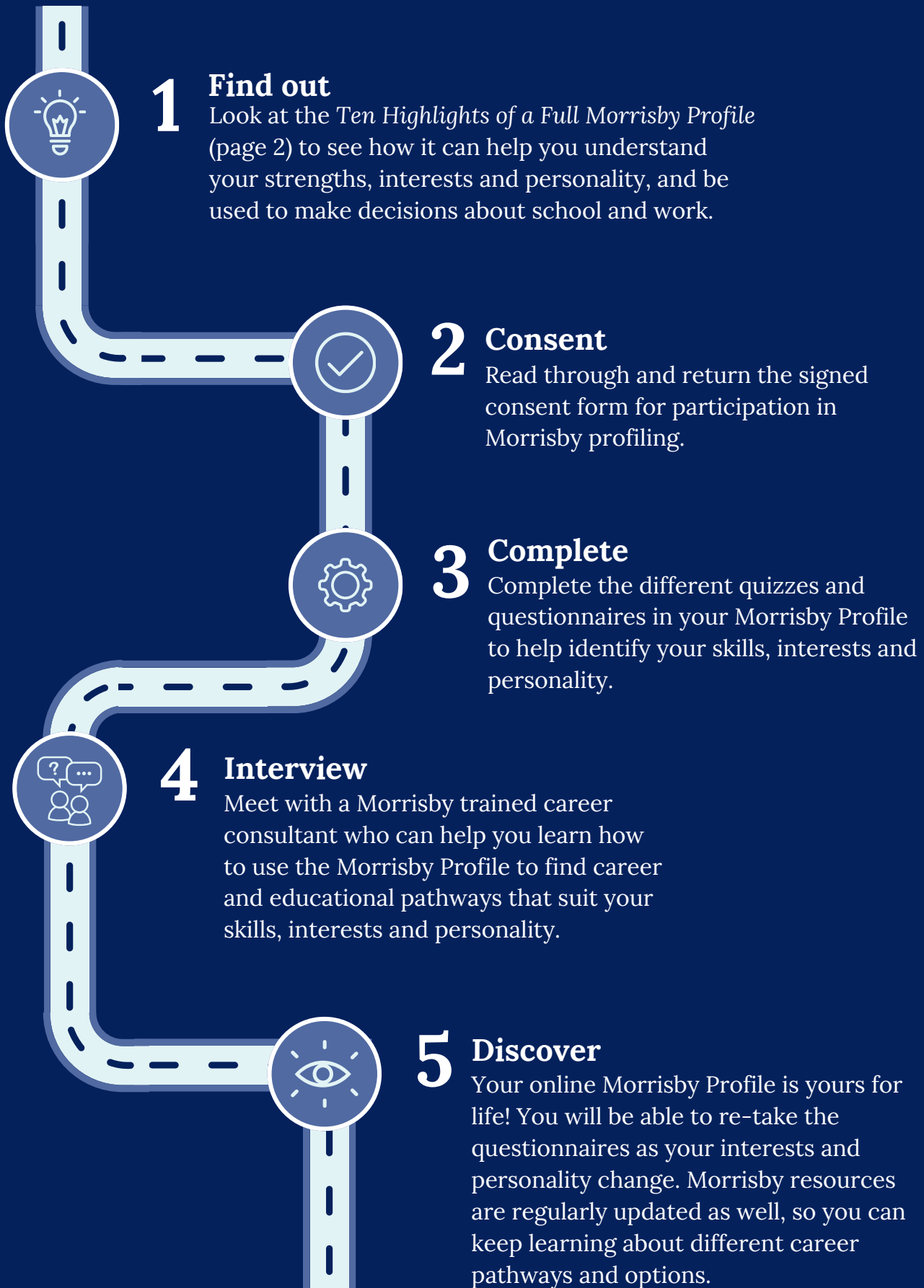


The My Career Insights Journey



Ten Highlights of a Full Morrisby Profile

1. Aptitudes

Find out about your skills and strengths, and the different kinds of careers and industries that can utilise them!



2. Interests

Would you rather work with people, information, or things? Find out how your interests fit in the World of Work here!



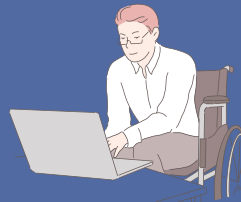
3. Your Work Style

Discover the kind of worker you are here, as we look into what motivates you, how you solve problems, and how you like to work.



4. Organisational Role

Look at the kind of workplace that might suit you best, and where you see yourself in that organisation.



5. Workplace

This section looks at the kind of environment you would like to work in, and what kind of energy you bring to it.

6. Personality

A deeper look into your personality, and how it effects the way you feel about and interact with the world.



7. Learning Style

Uncover your preferred learning style. Are you a thinker or a doer? A generalist or a specialist?



8. Career Suggestions

Discover careers that suit your interests, abilities and personality. Find information about pathways and resources for your favourites!



9. Planner

Choose some of your favourite career options, and explore different subjects and courses that can help you get there.

10. Lifetime Access

Update your profile as you grow to find more options and resources to support you along your career journey.

